

General Money Market Funds



Prospectus

Class A

Fund (Ticker)	Prospectus Date
General Money Market Fund, Inc. (GMMXX)	March 29, 2018
General Government Securities Money Market Fund (GGSXX)	March 29, 2018
General Treasury Securities Money Market Fund (GTAXX)	March 29, 2018
General Treasury and Agency Money Market Fund (DUIXX)	March 29, 2018
General Municipal Money Market Fund (GTMXX)	March 29, 2018
General California Municipal Money Market Fund (GCAXX)	March 29, 2018
General New York AMT-Free Municipal Money Market Fund (GNMXX)	March 29, 2018
General New Jersey Municipal Money Market Fund, Inc. (DNJXX)	March 29, 2018

As with all mutual funds, the Securities and Exchange Commission has not approved or disapproved these securities or passed upon the adequacy of this prospectus. Any representation to the contrary is a criminal offense.

Contents

Fund Summaries

General Money Market Fund, Inc.	1
General Government Securities Money Market Fund	4
General Treasury Securities Money Market Fund	7
General Treasury and Agency Money Market Fund	10
General Municipal Money Market Fund	13
General California Municipal Money Market Fund	16
General New York AMT-Free Municipal Money Market Fund	19
General New Jersey Municipal Money Market Fund, Inc.	22

Fund Details

Goal and Approach	25
Investment Risks	27
Management	30

Shareholder Guide

Buying and Selling Shares	32
General Policies	36
Distributions and Taxes	37
Services for Fund Investors	38
Financial Highlights	40

For More Information

See back cover.

Fund Summary

General Money Market Fund, Inc. Investment Objective

The fund seeks as high a level of current income as is consistent with the preservation of capital.

Fees and Expenses

This table describes the fees and expenses that you may pay if you buy and hold shares of the fund.

Annual Fund Operating Expenses (expenses that you pay each year as a percentage of the value of your investment)	
Management fees	0.50
Distribution (12b-1) fees	0.20
Other expenses (including shareholder services fees)	0.09
Total annual fund operating expenses	0.79

Example

The Example is intended to help you compare the cost of investing in the fund with the cost of investing in other mutual funds. The Example assumes that you invest \$10,000 in the fund for the time periods indicated and then hold or redeem all of your shares at the end of those periods. The Example also assumes that your investment has a 5% return each year and that the fund's operating expenses remain the same. Although your actual costs may be higher or lower, based on these assumptions your costs would be:

1 Year	3 Years	5 Years	10 Years
\$81	\$252	\$439	\$978

Principal Investment Strategy

To pursue its goal, the fund normally invests in a diversified portfolio of high quality, short-term, dollar-denominated debt securities, including: securities issued or guaranteed as to principal and interest by the U.S. government or its agencies or instrumentalities; certificates of deposit, time deposits, bankers' acceptances and other short-term securities issued by domestic or foreign banks or thrifts or their subsidiaries or branches; repurchase agreements, including tri-party repurchase agreements; asset-backed securities; domestic and dollar-denominated foreign commercial paper; and other short-term corporate obligations, including those with floating or variable rates of interest; and dollar-denominated obligations issued or guaranteed by one or more foreign governments or any of their political subdivisions or agencies. The fund's investments are concentrated in the banking industry, because the fund normally invests at least 25% of its net assets in domestic or dollar-denominated foreign bank obligations.

The fund is a money market fund subject to the maturity, quality, liquidity and diversification requirements of Rule 2a-7 under the Investment Company Act of 1940, as amended, and seeks to maintain a stable share price of \$1.00.

Principal Risks

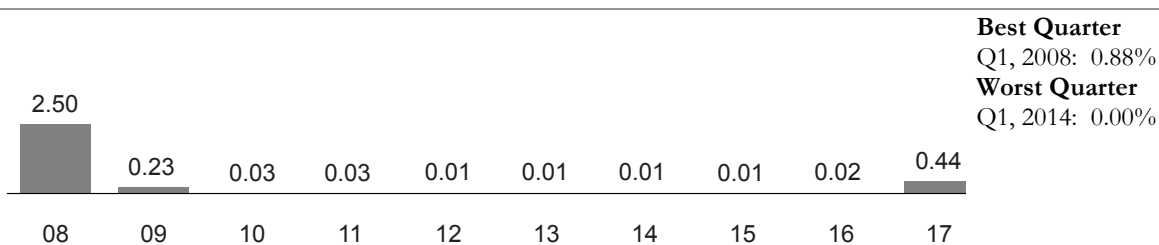
An investment in the fund is not a bank deposit. It is not insured or guaranteed by the Federal Deposit Insurance Corporation (FDIC) or any other government agency. You could lose money by investing in the fund. Although the fund seeks to preserve the value of your investment at \$1.00 per share, it cannot guarantee it will do so. The fund's yield will fluctuate as the short-term securities in its portfolio mature or are sold and the proceeds are reinvested in securities with different interest rates. The fund may impose a fee upon the sale of your shares (a "liquidity fee") or may temporarily suspend your ability to sell shares (a redemption "gate") if the fund's liquidity falls below required minimums

because of market conditions or other factors. Neither The Dreyfus Corporation nor its affiliates have a legal obligation to provide financial support to the fund, and you should not expect that The Dreyfus Corporation or its affiliates will provide financial support to the fund at any time. The following are the principal risks that could reduce the fund's income level and/or share price:

- *Interest rate risk.* This risk refers to the decline in the prices of fixed-income securities that may accompany a rise in the overall level of interest rates. A sharp and unexpected rise in interest rates could impair the fund's ability to maintain a stable net asset value. A low interest rate environment may prevent the fund from providing a positive yield or paying fund expenses out of fund assets and could impair the fund's ability to maintain a stable net asset value.
- *Liquidity risk.* When there is little or no active trading market for specific types of securities, it can become more difficult to sell the securities in a timely manner at or near their perceived value. In such a market, the value of such securities may fall dramatically, potentially impairing the fund's ability to maintain a stable net asset value, even during periods of declining interest rates.
- *Credit risk.* Failure of an issuer of a security to make timely interest or principal payments when due, or a decline or perception of a decline in the credit quality of a security, can cause the security's price to fall. Although the fund invests only in high quality debt securities, the credit quality of the securities held by the fund can change rapidly in certain market environments, and the default or a significant price decline of a single holding could impair the fund's ability to maintain a stable net asset value.
- *Banking industry risk.* The risks generally associated with concentrating investments in the banking industry include interest rate risk, credit risk, and regulatory developments relating to the banking industry.
- *Foreign investment risk.* The risks generally associated with dollar-denominated foreign investments include economic and political developments, seizure or nationalization of deposits, imposition of taxes or other restrictions on payment of principal and interest.
- *U.S. Treasury securities risk.* A security backed by the U.S. Treasury or the full faith and credit of the United States is guaranteed only as to the timely payment of interest and principal when held to maturity, but the market prices for such securities are not guaranteed and will fluctuate.
- *Government securities risk.* Not all obligations of the U.S. government, its agencies and instrumentalities are backed by the full faith and credit of the U.S. Treasury. Some obligations are backed only by the credit of the issuing agency or instrumentality, and in some cases there may be some risk of default by the issuer. Any guarantee by the U.S. government or its agencies or instrumentalities of a security held by the fund does not apply to the market value of such security or to shares of the fund itself. A security backed by the U.S. Treasury or the full faith and credit of the United States is guaranteed only as to the timely payment of interest and principal when held to maturity.
- *Repurchase agreement counterparty risk.* The fund is subject to the risk that a counterparty in a repurchase agreement and/or, for a tri-party repurchase agreement, the third party bank providing payment administration, collateral custody and management services for the transaction, could fail to honor the terms of the agreement.
- *Liquidity fee and/or redemption gate risk.* The fund may impose a fee upon the sale of your shares (a "liquidity fee") or may temporarily suspend your ability to sell shares (a redemption "gate") if the fund's liquidity falls below required minimums because of unusual market conditions, an unusually high volume of redemption requests, redemptions by a few large investors, or other reasons. If a liquidity fee is imposed by the fund, it would reduce the amount you will receive upon the redemption of your shares. A "gate" will suspend your ability to redeem your shares while the gate is imposed and may prevent the fund from being able to pay redemption proceeds within the allowable time period stated in this prospectus.

Performance

The following bar chart and table provide some indication of the risks of investing in the fund. The bar chart shows changes in the performance of the fund's Class A shares from year to year. The table shows the average annual total returns of the fund's Class A shares over time. The fund's past performance is not necessarily an indication of how the fund will perform in the future. More recent performance information may be available at www.dreyfus.com.

Year-by-Year Total Returns as of 12/31 each year (%)

Average Annual Total Returns as of 12/31/17

1 Year	5 Years	10 Years
0.44%	0.10%	0.33%

For the fund's current yield, call toll free 1-800-DREYFUS (inside the U.S. only).

Portfolio Management

The fund's investment adviser is The Dreyfus Corporation.

Purchase and Sale of Fund Shares

Investments in the fund are limited to accounts beneficially owned by natural persons.

In general, the fund's minimum initial investment is \$2,500 and the minimum subsequent investment is \$100. You may sell (redeem) your shares on any business day by calling 1-800-DREYFUS (inside the U.S. only) or by visiting www.dreyfus.com. If you invested in the fund through a third party, such as a bank, broker-dealer or financial adviser, or through a Retirement Plan (as defined below), you may mail your request to sell shares to Dreyfus Institutional Department, P.O. Box 9882, Providence, Rhode Island 02940-8082. If you invested directly through the fund, you may mail your request to sell shares to Dreyfus Shareholder Services, P.O. Box 9879, Providence, Rhode Island 02940-8079.

Retirement Plans include qualified or non-qualified employee benefit plans, such as 401(k), 403(b)(7), Keogh, pension, profit-sharing and other deferred compensation plans, whether established by corporations, partnerships, sole proprietorships, non-profit entities, trade or labor unions, or state and local governments, but do not include IRAs (including, without limitation, traditional IRAs, Roth IRAs, Coverdell Education Savings Accounts, IRA "Rollover Accounts" or IRAs set up under Simplified Employee Pension Plans (SEP-IRAs), Salary Reduction Simplified Employee Pension Plans (SARSEPs) or Savings Incentive Match Plans for Employees (SIMPLE IRAs)).

Tax Information

The fund's distributions are taxable as ordinary income or capital gains, except when your investment is through an IRA, Retirement Plan or other U.S. tax-advantaged investment plan (in which case you may be taxed upon withdrawal of your investment from such account).

Payments to Broker-Dealers and Other Financial Intermediaries

If you purchase shares through a broker-dealer or other financial intermediary (such as a bank), the fund and its related companies may pay the intermediary for the sale of fund shares and related services. To the extent that the intermediary may receive lesser or no payments in connection with the sale of other investments, the payments from the fund and its related companies may create a potential conflict of interest by influencing the broker-dealer or other intermediary and your financial representative to recommend the fund over the other investments. This potential conflict of interest may be addressed by policies, procedures or practices adopted by the financial intermediary. As there may be many different policies, procedures or practices adopted by different intermediaries to address the manner in which compensation is earned through the sale of investments or the provision of related services, the compensation rates and other payment arrangements that may apply to a financial intermediary and its representatives may vary by intermediary. Ask your financial representative or visit your financial intermediary's website for more information.

Fund Summary

General Government Securities Money Market Fund Investment Objective

The fund seeks as high a level of current income as is consistent with the preservation of capital and maintenance of liquidity.

Fees and Expenses

This table describes the fees and expenses that you may pay if you buy and hold shares of the fund.

Annual Fund Operating Expenses (expenses that you pay each year as a percentage of the value of your investment)	
Management fees	0.50
Distribution (12b-1) fees	0.20
Other expenses (including shareholder services fees)	0.14
Total annual fund operating expenses	0.84

Example

The Example is intended to help you compare the cost of investing in the fund with the cost of investing in other mutual funds. The Example assumes that you invest \$10,000 in the fund for the time periods indicated and then hold or redeem all of your shares at the end of those periods. The Example also assumes that your investment has a 5% return each year and that the fund's operating expenses remain the same. Although your actual costs may be higher or lower, based on these assumptions your costs would be:

1 Year	3 Years	5 Years	10 Years
\$86	\$268	\$466	\$1,037

Principal Investment Strategy

The fund pursues its investment objective by investing only in government securities (i.e., securities issued or guaranteed as to principal and interest by the U.S. government or its agencies or instrumentalities, including those with floating or variable rates of interest), repurchase agreements collateralized solely by government securities and/or cash, and cash. The fund is a money market fund subject to the maturity, quality, liquidity and diversification requirements of Rule 2a-7 under the Investment Company Act of 1940, as amended, and seeks to maintain a stable share price of \$1.00.

The fund is a "government money market fund," as that term is defined in Rule 2a-7, and as such is required to invest at least 99.5% of its total assets in securities issued or guaranteed as to principal and interest by the U.S. government or its agencies or instrumentalities, repurchase agreements collateralized solely by cash and/or government securities, and cash. The fund normally invests at least 80% of its net assets in government securities and repurchase agreements collateralized solely by government securities (i.e., under normal circumstances, the fund will not invest more than 20% of its net assets in cash and/or repurchase agreements collateralized by cash). The securities in which the fund invests include those backed by the full faith and credit of the U.S. government, which include U.S. Treasury securities as well as securities issued by certain agencies of the U.S. government, and those that are neither insured nor guaranteed by the U.S. government.

Principal Risks

An investment in the fund is not a bank deposit. It is not insured or guaranteed by the Federal Deposit Insurance Corporation (FDIC) or any other government agency. You could lose money by investing in the fund. Although the fund seeks to preserve the value of your investment at \$1.00 per share, it cannot guarantee it will do so. The fund's yield

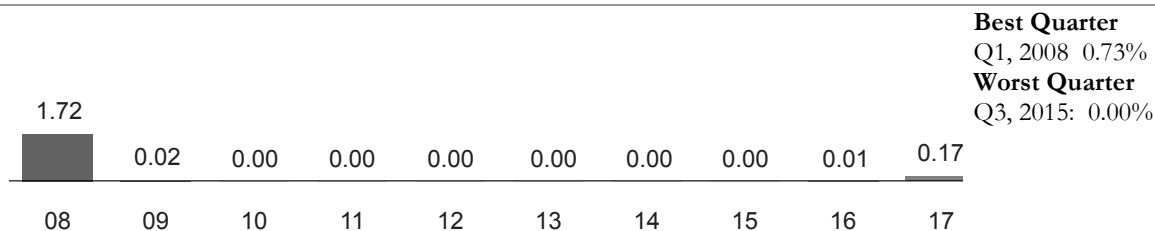
will fluctuate as the short-term securities in its portfolio mature or are sold and the proceeds are reinvested in securities with different interest rates. The fund currently is not permitted to impose a fee upon the sale of shares (a "liquidity fee") or temporarily suspend redemptions (a redemption "gate") under distressed conditions as some other types of money market funds are, and the fund's board has no intention to impose a liquidity fee or redemption gate. Neither The Dreyfus Corporation nor its affiliates have a legal obligation to provide financial support to the fund, and you should not expect that The Dreyfus Corporation or its affiliates will provide financial support to the fund at any time. The following are the principal risks that could reduce the fund's income level and/or share price:

- *Interest rate risk.* This risk refers to the decline in the prices of fixed-income securities that may accompany a rise in the overall level of interest rates. A sharp and unexpected rise in interest rates could impair the fund's ability to maintain a stable net asset value. A low interest rate environment may prevent the fund from providing a positive yield or paying fund expenses out of fund assets and could impair the fund's ability to maintain a stable net asset value.
- *Liquidity risk.* When there is little or no active trading market for specific types of securities, it can become more difficult to sell the securities in a timely manner at or near their perceived value. In such a market, the value of such securities may fall dramatically, potentially impairing the fund's ability to maintain a stable net asset value, even during periods of declining interest rates.
- *U.S. Treasury securities risk.* A security backed by the U.S. Treasury or the full faith and credit of the United States is guaranteed only as to the timely payment of interest and principal when held to maturity, but the market prices for such securities are not guaranteed and will fluctuate.
- *Government securities risk.* Not all obligations of the U.S. government, its agencies and instrumentalities are backed by the full faith and credit of the U.S. Treasury. Some obligations are backed only by the credit of the issuing agency or instrumentality, and in some cases there may be some risk of default by the issuer. Any guarantee by the U.S. government or its agencies or instrumentalities of a security held by the fund does not apply to the market value of such security or to shares of the fund itself. A security backed by the U.S. Treasury or the full faith and credit of the United States is guaranteed only as to the timely payment of interest and principal when held to maturity.
- *Repurchase agreement counterparty risk.* The fund is subject to the risk that a counterparty in a repurchase agreement could fail to honor the terms of the agreement.

Performance

The following bar chart and table provide some indication of the risks of investing in the fund. The bar chart shows changes in the performance of the fund's Class A shares from year to year. The table shows the average annual total returns of the fund's Class A shares over time. The fund's past performance is not necessarily an indication of how the fund will perform in the future. More recent performance information may be available at www.dreyfus.com.

Year-by-Year Total Returns as of 12/31 each year (%)



Average Annual Total Returns as of 12/31/17

1 Year	5 Years	10 Years
0.17%	0.04%	0.19%

For the fund's current yield, call toll free 1-800-DREYFUS (inside the U.S. only).

Portfolio Management

The fund's investment adviser is The Dreyfus Corporation.

Purchase and Sale of Fund Shares

In general, the fund's minimum initial investment is \$2,500 and the minimum subsequent investment is \$100. You may sell (redeem) your shares on any business day by calling 1-800-DREYFUS (inside the U.S. only) or by visiting www.dreyfus.com. If you invested in the fund through a third party, such as a bank, broker-dealer or financial adviser, or through a Retirement Plan (as defined below), you may mail your request to sell shares to Dreyfus Institutional Department, P.O. Box 9882, Providence, Rhode Island 02940-8082. If you invested directly through the fund, you may mail your request to sell shares to Dreyfus Shareholder Services, P.O. Box 9879, Providence, Rhode Island 02940-8079.

Retirement Plans include qualified or non-qualified employee benefit plans, such as 401(k), 403(b)(7), Keogh, pension, profit-sharing and other deferred compensation plans, whether established by corporations, partnerships, sole proprietorships, non-profit entities, trade or labor unions, or state and local governments, but do not include IRAs (including, without limitation, traditional IRAs, Roth IRAs, Coverdell Education Savings Accounts, IRA "Rollover Accounts" or IRAs set up under Simplified Employee Pension Plans (SEP-IRAs), Salary Reduction Simplified Employee Pension Plans (SARSEPs) or Savings Incentive Match Plans for Employees (SIMPLE IRAs)).

Tax Information

The fund's distributions are taxable as ordinary income or capital gains, except when your investment is through an IRA, Retirement Plan or other U.S. tax-advantaged investment plan (in which case you may be taxed upon withdrawal of your investment from such account).

Payments to Broker-Dealers and Other Financial Intermediaries

If you purchase shares through a broker-dealer or other financial intermediary (such as a bank), the fund and its related companies may pay the intermediary for the sale of fund shares and related services. To the extent that the intermediary may receive lesser or no payments in connection with the sale of other investments, the payments from the fund and its related companies may create a potential conflict of interest by influencing the broker-dealer or other intermediary and your financial representative to recommend the fund over the other investments. This potential conflict of interest may be addressed by policies, procedures or practices adopted by the financial intermediary. As there may be many different policies, procedures or practices adopted by different intermediaries to address the manner in which compensation is earned through the sale of investments or the provision of related services, the compensation rates and other payment arrangements that may apply to a financial intermediary and its representatives may vary by intermediary. Ask your financial representative or visit your financial intermediary's website for more information.

Fund Summary

General Treasury Securities Money Market Fund Investment Objective

The fund seeks as high a level of current income as is consistent with the preservation of capital and maintenance of liquidity.

Fees and Expenses

This table describes the fees and expenses that you may pay if you buy and hold shares of the fund.

Annual Fund Operating Expenses (expenses that you pay each year as a percentage of the value of your investment)	
Management fees	0.50
Distribution (12b-1) fees	0.20
Other expenses (including shareholder services fees)	0.14
Total annual fund operating expenses	0.84

Example

The Example is intended to help you compare the cost of investing in the fund with the cost of investing in other mutual funds. The Example assumes that you invest \$10,000 in the fund for the time periods indicated and then hold or redeem all of your shares at the end of those periods. The Example also assumes that your investment has a 5% return each year and that the fund's operating expenses remain the same. Although your actual costs may be higher or lower, based on these assumptions your costs would be:

1 Year	3 Years	5 Years	10 Years
\$86	\$268	\$466	\$1,037

Principal Investment Strategy

The fund pursues its investment objective by investing only in U.S. Treasury securities (i.e., securities issued or guaranteed as to principal and interest by the U.S. government, including those with floating or variable rates of interest) and cash. The fund is a money market fund subject to the maturity, quality, liquidity and diversification requirements of Rule 2a-7 under the Investment Company Act of 1940, as amended, and seeks to maintain a stable share price of \$1.00.

The fund is a "government money market fund," as that term is defined in Rule 2a-7, and as such is required to invest at least 99.5% of its total assets in securities issued or guaranteed as to principal and interest by the U.S. government or its agencies or instrumentalities, repurchase agreements collateralized solely by cash and/or government securities, and cash. The fund normally invests at least 80% of its net assets in U.S. Treasury securities (i.e., under normal circumstances, the fund will not invest more than 20% of its net assets in cash), and typically invests exclusively in U.S. Treasury securities.

The fund is managed so that income paid by the fund will be exempt from state and local taxes. Because rules regarding the state and local taxation of dividend income can differ from state to state, investors are urged to consult their tax advisers about the taxation of the fund's dividend income in their state and locality.

Principal Risks

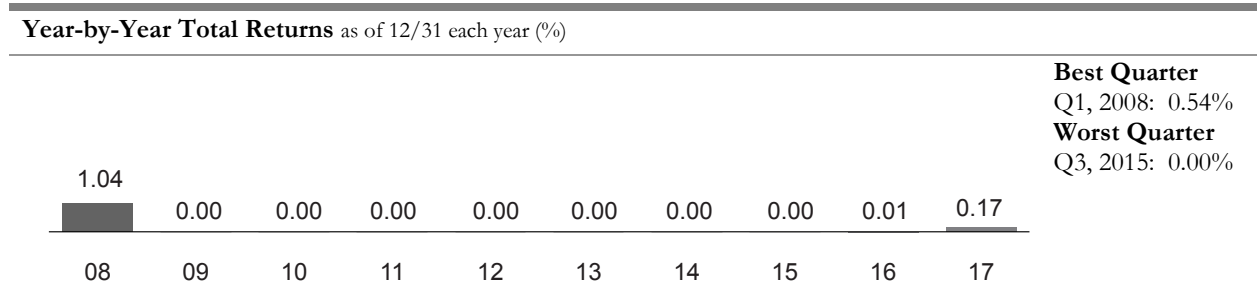
An investment in the fund is not a bank deposit. It is not insured or guaranteed by the Federal Deposit Insurance Corporation (FDIC) or any other government agency. You could lose money by investing in the fund. Although the

fund seeks to preserve the value of your investment at \$1.00 per share, it cannot guarantee it will do so. The fund's yield will fluctuate as the short-term securities in its portfolio mature or are sold and the proceeds are reinvested in securities with different interest rates. The fund currently is not permitted to impose a fee upon the sale of shares (a "liquidity fee") or temporarily suspend redemptions (a redemption "gate") under distressed conditions as some other types of money market funds are, and the fund's board has no intention to impose a liquidity fee or redemption gate. Neither The Dreyfus Corporation nor its affiliates have a legal obligation to provide financial support to the fund, and you should not expect that The Dreyfus Corporation or its affiliates will provide financial support to the fund at any time. The following are the principal risks that could reduce the fund's income level and/or share price:

- *Interest rate risk.* This risk refers to the decline in the prices of fixed-income securities that may accompany a rise in the overall level of interest rates. A sharp and unexpected rise in interest rates could impair the fund's ability to maintain a stable net asset value. A low interest rate environment may prevent the fund from providing a positive yield or paying fund expenses out of fund assets and could impair the fund's ability to maintain a stable net asset value.
- *Liquidity risk.* When there is little or no active trading market for specific types of securities, it can become more difficult to sell the securities in a timely manner at or near their perceived value. In such a market, the value of such securities may fall dramatically, potentially impairing the fund's ability to maintain a stable net asset value, even during periods of declining interest rates.
- *U.S. Treasury securities risk.* A security backed by the U.S. Treasury or the full faith and credit of the United States is guaranteed only as to the timely payment of interest and principal when held to maturity, but the market prices for such securities are not guaranteed and will fluctuate.

Performance

The following bar chart and table provide some indication of the risks of investing in the fund. The bar chart shows changes in the performance of the fund's Class A shares from year to year. The table shows the average annual total returns of the fund's Class A shares over time. The fund's past performance is not necessarily an indication of how the fund will perform in the future. More recent performance information may be available at www.dreyfus.com.



Average Annual Total Returns as of 12/31/17

1 Year	5 Years	10 Years
0.17%	0.04%	0.12%

For the fund's current yield, call toll free 1-800-DREYFUS (inside the U.S. only)

Portfolio Management

The fund's investment adviser is The Dreyfus Corporation.

Purchase and Sale of Fund Shares

In general, the fund's minimum initial investment is \$2,500 and the minimum subsequent investment is \$100. You may sell (redeem) your shares on any business day by calling 1-800-DREYFUS (inside the U.S. only) or by visiting www.dreyfus.com. If you invested in the fund through a third party, such as a bank, broker-dealer or financial adviser, or through a Retirement Plan (as defined below), you may mail your request to sell shares to Dreyfus Institutional Department, P.O. Box 9882, Providence, Rhode Island 02940-8082. If you invested directly through the fund, you may mail your request to sell shares to Dreyfus Shareholder Services, P.O. Box 9879, Providence, Rhode Island 02940-8079.

Retirement Plans include qualified or non-qualified employee benefit plans, such as 401(k), 403(b)(7), Keogh, pension, profit-sharing and other deferred compensation plans, whether established by corporations, partnerships, sole proprietorships, non-profit entities, trade or labor unions, or state and local governments, but do not include IRAs (including, without limitation, traditional IRAs, Roth IRAs, Coverdell Education Savings Accounts, IRA "Rollover Accounts" or IRAs set up under Simplified Employee Pension Plans (SEP-IRAs), Salary Reduction Simplified Employee Pension Plans (SARSEPs) or Savings Incentive Match Plans for Employees (SIMPLE IRAs)).

Tax Information

The fund's distributions are taxable as ordinary income or capital gains, except when your investment is through an IRA, Retirement Plan or other U.S. tax-advantaged investment plan (in which case you may be taxed upon withdrawal of your investment from such account).

Payments to Broker-Dealers and Other Financial Intermediaries

If you purchase shares through a broker-dealer or other financial intermediary (such as a bank), the fund and its related companies may pay the intermediary for the sale of fund shares and related services. To the extent that the intermediary may receive lesser or no payments in connection with the sale of other investments, the payments from the fund and its related companies may create a potential conflict of interest by influencing the broker-dealer or other intermediary and your financial representative to recommend the fund over the other investments. This potential conflict of interest may be addressed by policies, procedures or practices adopted by the financial intermediary. As there may be many different policies, procedures or practices adopted by different intermediaries to address the manner in which compensation is earned through the sale of investments or the provision of related services, the compensation rates and other payment arrangements that may apply to a financial intermediary and its representatives may vary by intermediary. Ask your financial representative or visit your financial intermediary's website for more information.

Fund Summary

General Treasury and Agency Money Market Fund Investment Objective

The fund seeks a high level of current income consistent with stability of principal.

Fees and Expenses

This table describes the fees and expenses that you may pay if you buy and hold shares of the fund.

Annual Fund Operating Expenses (expenses that you pay each year as a percentage of the value of your investment)	
Management fees	0.50
Distribution and/or service (12b-1) fees	0.20
Other expenses	0.01
Total annual fund operating expenses	0.71
Fee waiver and/or expense reimbursement*	(.01)
Total annual fund operating expenses (after fee waiver and/or expense reimbursement)	0.70

*The fund's investment adviser, The Dreyfus Corporation, has agreed in its investment management agreement with the fund to: (1) pay all of the fund's expenses, except management fees, Rule 12b-1 fees and certain other expenses, including the fees and expenses of the non-interested board members and their counsel, and (2) reduce its fees pursuant to the investment management agreement in an amount equal to the fund's allocable portion of the fees and expenses of the non-interested board members and their counsel (in the amount of .01% for the past fiscal year). These provisions in the investment management agreement may not be amended without the approval of the fund's shareholders.

Example

The Example is intended to help you compare the cost of investing in the fund with the cost of investing in other mutual funds. The Example assumes that you invest \$10,000 in the fund for the time periods indicated and then hold or redeem all of your shares at the end of those periods. The Example also assumes that your investment has a 5% return each year and that the fund's operating expenses remain the same. Although your actual costs may be higher or lower, based on these assumptions your costs would be:

1 Year	3 Years	5 Years	10 Years
\$72	\$224	\$390	\$871

Principal Investment Strategy

The fund pursues its investment objective by investing only in U.S. Treasury securities, repurchase agreements collateralized solely by U.S. Treasury securities or securities issued by U.S. government agencies that are backed by the full faith and credit of the U.S. government, and cash. The fund is a money market fund subject to the maturity, quality, liquidity and diversification requirements of Rule 2a-7 under the Investment Company Act of 1940, as amended, and seeks to maintain a stable share price of \$1.00.

The fund is a "government money market fund," as that term is defined in Rule 2a-7, and as such is required to invest at least 99.5% of its total assets in securities issued or guaranteed as to principal and interest by the U.S. government or its agencies or instrumentalities, repurchase agreements collateralized solely by cash and/or government securities, and cash. The fund normally invests at least 80% of its net assets in U.S. Treasury securities and repurchase agreements collateralized solely by U.S. Treasury securities or securities issued by U.S. government agencies that are backed by the full faith and credit of the U.S. government (i.e., under normal circumstances, the fund will not invest more than 20% of its net assets in cash or repurchase agreements collateralized by cash), and typically invests exclusively in such securities.

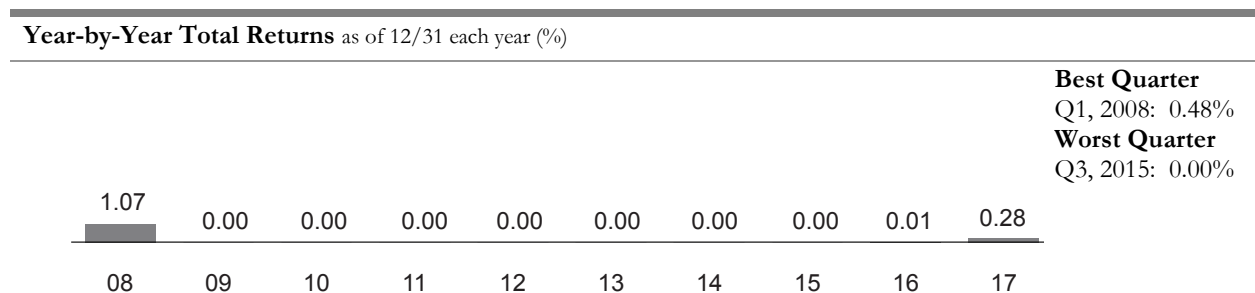
Principal Risks

An investment in the fund is not a bank deposit. It is not insured or guaranteed by the Federal Deposit Insurance Corporation (FDIC) or any other government agency. You could lose money by investing in the fund. Although the fund seeks to preserve the value of your investment at \$1.00 per share, it cannot guarantee it will do so. The fund's yield will fluctuate as the short-term securities in its portfolio mature or are sold and the proceeds are reinvested in securities with different interest rates. The fund currently is not permitted to impose a fee upon the sale of shares (a "liquidity fee") or temporarily suspend redemptions (a redemption "gate") under distressed conditions as some other types of money market funds are, and the fund's board has no intention to impose a liquidity fee or redemption gate. Neither The Dreyfus Corporation nor its affiliates have a legal obligation to provide financial support to the fund, and you should not expect that The Dreyfus Corporation or its affiliates will provide financial support to the fund at any time. The following are the principal risks that could reduce the fund's income level and/or share price:

- *Interest rate risk.* This risk refers to the decline in the prices of fixed-income securities that may accompany a rise in the overall level of interest rates. A sharp and unexpected rise in interest rates could impair the fund's ability to maintain a stable net asset value. A low interest rate environment may prevent the fund from providing a positive yield or paying fund expenses out of fund assets and could impair the fund's ability to maintain a stable net asset value.
- *Liquidity risk.* When there is little or no active trading market for specific types of securities, it can become more difficult to sell the securities in a timely manner at or near their perceived value. In such a market, the value of such securities may fall dramatically, potentially impairing the fund's ability to maintain a stable net asset value, even during periods of declining interest rates.
- *U.S. Treasury securities risk.* A security backed by the U.S. Treasury or the full faith and credit of the United States is guaranteed only as to the timely payment of interest and principal when held to maturity, but the market prices for such securities are not guaranteed and will fluctuate.
- *Repurchase agreement counterparty risk.* The fund is subject to the risk that a counterparty in a repurchase agreement could fail to honor the terms of the agreement.

Performance

The following bar chart and table provide some indication of the risks of investing in the fund. The bar chart shows changes in the performance of the fund's Class A shares from year to year. The table shows the average annual total returns of the fund's Class A shares over time. The fund's past performance is not necessarily an indication of how the fund will perform in the future. More recent performance information may be available at www.dreyfus.com.



Average Annual Total Returns as of 12/31/17

Period	1 Year	5 Years	10 Years
Average Annual Total Return (%)	0.28%	0.06%	0.14%

For the fund's current yield, call toll free 1-800-DREYFUS (inside the U.S. only).

Portfolio Management

The fund's investment adviser is The Dreyfus Corporation.

Purchase and Sale of Fund Shares

In general, the fund's minimum initial investment is \$2,500 and the minimum subsequent investment is \$100. You may sell (redeem) your shares on any business day by calling 1-800-DREYFUS (inside the U.S. only) or by visiting www.dreyfus.com. If you invested in the fund through a third party, such as a bank, broker-dealer or financial adviser, or through a Retirement Plan (as defined below), you may mail your request to sell shares to Dreyfus Institutional Department, P.O. Box 9882, Providence, Rhode Island 02940-8082. If you invested directly through the fund, you may mail your request to sell shares to Dreyfus Shareholder Services, P.O. Box 9879, Providence, Rhode Island 02940-8079.

Retirement Plans include qualified or non-qualified employee benefit plans, such as 401(k), 403(b)(7), Keogh, pension, profit-sharing and other deferred compensation plans, whether established by corporations, partnerships, sole proprietorships, non-profit entities, trade or labor unions, or state and local governments, but do not include IRAs (including, without limitation, traditional IRAs, Roth IRAs, Coverdell Education Savings Accounts, IRA "Rollover Accounts" or IRAs set up under Simplified Employee Pension Plans (SEP-IRAs), Salary Reduction Simplified Employee Pension Plans (SARSEPs) or Savings Incentive Match Plans for Employees (SIMPLE IRAs)).

Tax Information

The fund's distributions are taxable as ordinary income or capital gains, except when your investment is through an IRA, Retirement Plan or other U.S. tax-advantaged investment plan (in which case you may be taxed upon withdrawal of your investment from such account).

Payments to Broker-Dealers and Other Financial Intermediaries

If you purchase shares through a broker-dealer or other financial intermediary (such as a bank), the fund and its related companies may pay the intermediary for the sale of fund shares and related services. To the extent that the intermediary may receive lesser or no payments in connection with the sale of other investments, the payments from the fund and its related companies may create a potential conflict of interest by influencing the broker-dealer or other intermediary and your financial representative to recommend the fund over the other investments. This potential conflict of interest may be addressed by policies, procedures or practices adopted by the financial intermediary. As there may be many different policies, procedures or practices adopted by different intermediaries to address the manner in which compensation is earned through the sale of investments or the provision of related services, the compensation rates and other payment arrangements that may apply to a financial intermediary and its representatives may vary by intermediary. Ask your financial representative or visit your financial intermediary's website for more information.

Fund Summary

General Municipal Money Market Fund Investment Objective

The fund seeks to maximize current income exempt from federal income tax, to the extent consistent with the preservation of capital and the maintenance of liquidity.

Fees and Expenses

This table describes the fees and expenses that you may pay if you buy and hold shares of the fund.

Annual Fund Operating Expenses (expenses that you pay each year as a percentage of the value of your investment)	
Management fees	0.50
Other expenses (including shareholder services fees)	0.14
Total annual fund operating expenses	0.64

Example

The Example is intended to help you compare the cost of investing in the fund with the cost of investing in other mutual funds. The Example assumes that you invest \$10,000 in the fund for the time periods indicated and then hold or redeem all of your shares at the end of those periods. The Example also assumes that your investment has a 5% return each year and that the fund's operating expenses remain the same. Although your actual costs may be higher or lower, based on these assumptions your costs would be:

1 Year	3 Years	5 Years	10 Years
\$65	\$205	\$357	\$798

Principal Investment Strategy

To pursue its goal, the fund normally invests substantially all of its net assets in short-term, high quality municipal obligations that provide income exempt from federal income taxes. The fund also may invest in high quality, short-term structured notes, which are derivative instruments whose value is tied to underlying municipal obligations.

Although the fund seeks to provide income exempt from federal income tax, income from some of the fund's holdings may be subject to the federal alternative minimum tax. In addition, the fund may invest temporarily in high quality, taxable money market instruments, including when the portfolio manager believes that acceptable municipal obligations are not available for investment. During such periods, the fund may not achieve its investment objective.

The fund is a money market fund subject to the maturity, quality, liquidity and diversification requirements of Rule 2a-7 under the Investment Company Act of 1940, as amended, and seeks to maintain a stable share price of \$1.00.

Principal Risks

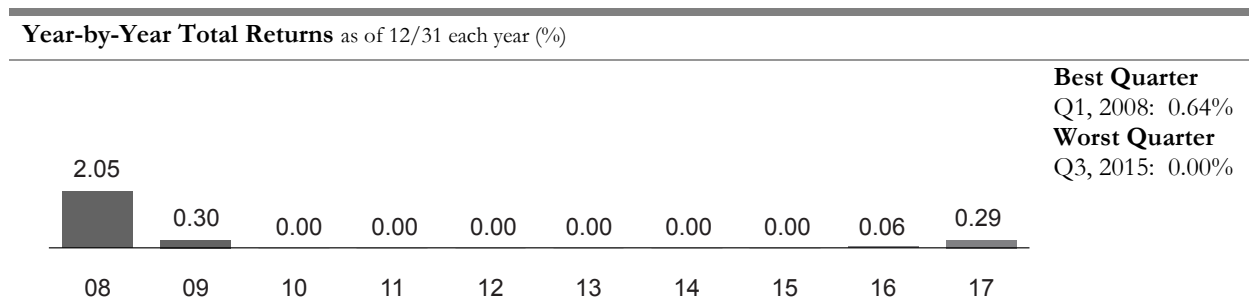
An investment in the fund is not a bank deposit. It is not insured or guaranteed by the Federal Deposit Insurance Corporation (FDIC) or any other government agency. You could lose money by investing in the fund. Although the fund seeks to preserve the value of your investment at \$1.00 per share, it cannot guarantee it will do so. The fund's yield will fluctuate as the short-term securities in its portfolio mature or are sold and the proceeds are reinvested in securities with different interest rates. The fund may impose a fee upon the sale of your shares (a "liquidity fee") or may temporarily suspend your ability to sell shares (a redemption "gate") if the fund's liquidity falls below required minimums because of market conditions or other factors. Neither The Dreyfus Corporation nor its affiliates have a legal obligation

to provide financial support to the fund, and you should not expect that The Dreyfus Corporation or its affiliates will provide financial support to the fund at any time. The following are the principal risks that could reduce the fund's income level and/or share price:

- *Interest rate risk.* This risk refers to the decline in the prices of fixed-income securities that may accompany a rise in the overall level of interest rates. A sharp and unexpected rise in interest rates could impair the fund's ability to maintain a stable net asset value. A low interest rate environment may prevent the fund from providing a positive yield or paying fund expenses out of fund assets and could impair the fund's ability to maintain a stable net asset value.
- *Liquidity risk.* When there is little or no active trading market for specific types of securities, it can become more difficult to sell the securities in a timely manner at or near their perceived value. In such a market, the value of such securities may fall dramatically, potentially impairing the fund's ability to maintain a stable net asset value, even during periods of declining interest rates.
- *Credit risk.* Failure of an issuer of a security to make timely interest or principal payments when due, or a decline or perception of a decline in the credit quality of a security, can cause the security's price to fall. Although the fund invests only in high quality debt securities, the credit quality of the securities held by the fund can change rapidly in certain market environments, and the default or a significant price decline of a single holding could impair the fund's ability to maintain a stable net asset value.
- *Municipal securities risk.* Municipal securities may be fully or partially backed or enhanced by the taxing authority of a local government, by the current or anticipated revenues from a specific project or specific assets, or by the credit of, or liquidity enhancement provided by, a private issuer. Special factors, such as legislative changes, and state and local economic and business developments, may adversely affect the yield and/or the fund's ability to maintain a stable net asset value.
- *Structured notes risk.* Structured notes, a type of derivative instrument, can be volatile, and the possibility of default by the financial institution or counterparty may be greater for these instruments than for other types of money market instruments. Structured notes typically are purchased in privately negotiated transactions from financial institutions and, thus, an active trading market for such instruments may not exist.
- *Tax risk.* To be tax-exempt, municipal obligations generally must meet certain regulatory requirements. If any such municipal obligation fails to meet these regulatory requirements, the interest received by the fund from its investment in such obligations and distributed to fund shareholders will be taxable.
- *Liquidity fee and/or redemption gate risk.* The fund may impose a fee upon the sale of your shares (a "liquidity fee") or may temporarily suspend your ability to sell shares (a redemption "gate") if the fund's liquidity falls below required minimums because of unusual market conditions, an unusually high volume of redemption requests, redemptions by a few large investors, or other reasons. If a liquidity fee is imposed by the fund, it would reduce the amount you will receive upon the redemption of your shares. A "gate" will suspend your ability to redeem your shares while the gate is imposed and may prevent the fund from being able to pay redemption proceeds within the allowable time period stated in this prospectus.

Performance

The following bar chart and table provide some indication of the risks of investing in the fund. The bar chart shows changes in the performance of the fund's Class A shares from year to year. The table shows the average annual total returns of the fund's Class A shares over time. The fund's past performance is not necessarily an indication of how the fund will perform in the future. More recent performance information may be available at www.dreyfus.com.



Average Annual Total Returns as of 12/31/17

1 Year	5 Years	10 Years
0.29%	0.07%	0.27%

For the fund's current yield call toll-free 1-800-DREYFUS (inside the U.S. only).

Portfolio Management

The fund's investment adviser is The Dreyfus Corporation.

Purchase and Sale of Fund Shares

Investments in the fund are limited to accounts beneficially owned by natural persons.

In general, the fund's minimum initial investment is \$2,500 and the minimum subsequent investment is \$100. You may sell (redeem) your shares on any business day by calling 1-800-DREYFUS (inside the U.S. only) or by visiting www.dreyfus.com. If you invested in the fund through a third party, such as a bank, broker-dealer or financial adviser, you may mail your request to sell shares to Dreyfus Institutional Department, P.O. Box 9882, Providence, Rhode Island 02940-8082. If you invested directly through the fund, you may mail your request to sell shares to Dreyfus Shareholder Services, P.O. Box 9879, Providence, Rhode Island 02940-8079.

Tax Information

The fund anticipates that dividends paid by the fund generally will be exempt from federal income tax. However, the fund may realize and distribute taxable income and capital gains from time to time as a result of the fund's normal investment activities.

Payments to Broker-Dealers and Other Financial Intermediaries

If you purchase shares through a broker-dealer or other financial intermediary (such as a bank), the fund and its related companies may pay the intermediary for the sale of fund shares and related services. To the extent that the intermediary may receive lesser or no payments in connection with the sale of other investments, the payments from the fund and its related companies may create a potential conflict of interest by influencing the broker-dealer or other intermediary and your financial representative to recommend the fund over the other investments. This potential conflict of interest may be addressed by policies, procedures or practices adopted by the financial intermediary. As there may be many different policies, procedures or practices adopted by different intermediaries to address the manner in which compensation is earned through the sale of investments or the provision of related services, the compensation rates and other payment arrangements that may apply to a financial intermediary and its representatives may vary by intermediary. Ask your financial representative or visit your financial intermediary's website for more information.

Fund Summary

General California Municipal Money Market Fund Investment Objective

The fund seeks to maximize current income exempt from federal and California state income taxes, to the extent consistent with the preservation of capital and the maintenance of liquidity.

Fees and Expenses

This table describes the fees and expenses that you may pay if you buy and hold shares of the fund.

Annual Fund Operating Expenses (expenses that you pay each year as a percentage of the value of your investment)	
Management fees	0.50
Other expenses (including shareholder services fees)	0.34
Total annual fund operating expenses	0.84

Example

The Example is intended to help you compare the cost of investing in the fund with the cost of investing in other mutual funds. The Example assumes that you invest \$10,000 in the fund for the time periods indicated and then hold or redeem all of your shares at the end of those periods. The Example also assumes that your investment has a 5% return each year and that the fund's operating expenses remain the same. Although your actual costs may be higher or lower, based on these assumptions your costs would be:

1 Year	3 Years	5 Years	10 Years
\$86	\$268	\$466	\$1,037

Principal Investment Strategy

To pursue its goal, the fund normally invests at least 80% of its net assets in short-term, high quality municipal obligations that provide income exempt from federal and California state income taxes. The fund also may invest in high quality, short-term structured notes, which are derivative instruments whose value is tied to underlying municipal obligations.

Although the fund seeks to provide income exempt from federal and California state income taxes, income from some of the fund's holdings may be subject to the federal alternative minimum tax. The fund may invest temporarily in high quality, taxable money market instruments, including when the portfolio manager believes that acceptable California municipal obligations are not available for investment. During such periods, the fund may not achieve its investment objective. In addition, a portion of the fund's assets may be invested in short-term, high quality municipal obligations that do not pay income that is exempt from California state income taxes.

The fund is a money market fund subject to the maturity, quality, liquidity and diversification requirements of Rule 2a-7 under the Investment Company Act of 1940, as amended, and seeks to maintain a stable share price of \$1.00.

Principal Risks

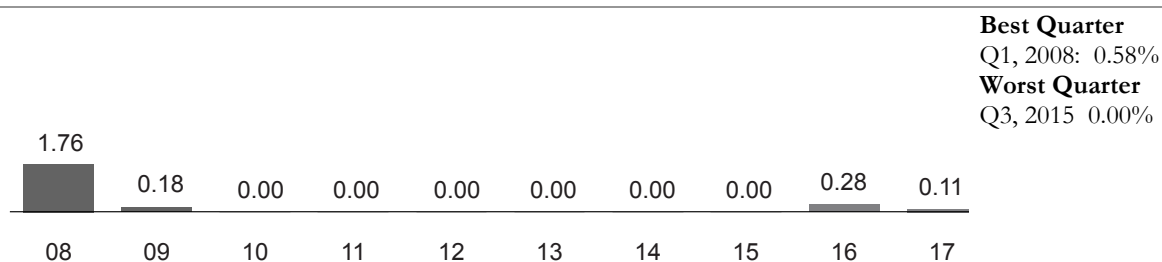
An investment in the fund is not a bank deposit. It is not insured or guaranteed by the Federal Deposit Insurance Corporation (FDIC) or any other government agency. You could lose money by investing in the fund. Although the fund seeks to preserve the value of your investment at \$1.00 per share, it cannot guarantee it will do so. The fund's yield will fluctuate as the short-term securities in its portfolio mature or are sold and the proceeds are reinvested in securities with different interest rates. The fund may impose a fee upon the sale of your shares (a "liquidity fee") or may

temporarily suspend your ability to sell shares (a redemption "gate") if the fund's liquidity falls below required minimums because of market conditions or other factors. Neither The Dreyfus Corporation nor its affiliates have a legal obligation to provide financial support to the fund, and you should not expect that The Dreyfus Corporation or its affiliates will provide financial support to the fund at any time. The following are the principal risks that could reduce the fund's income level and/or share price:

- *Interest rate risk.* This risk refers to the decline in the prices of fixed-income securities that may accompany a rise in the overall level of interest rates. A sharp and unexpected rise in interest rates could impair the fund's ability to maintain a stable net asset value. A low interest rate environment may prevent the fund from providing a positive yield or paying fund expenses out of fund assets and could impair the fund's ability to maintain a stable net asset value.
- *Liquidity risk.* When there is little or no active trading market for specific types of securities, it can become more difficult to sell the securities in a timely manner at or near their perceived value. In such a market, the value of such securities may fall dramatically, potentially impairing the fund's ability to maintain a stable net asset value, even during periods of declining interest rates.
- *Credit risk.* Failure of an issuer of a security to make timely interest or principal payments when due, or a decline or perception of a decline in the credit quality of a security, can cause the security's price to fall. Although the fund invests only in high quality debt securities, the credit quality of the securities held by the fund can change rapidly in certain market environments, and the default or a significant price decline of a single holding could impair the fund's ability to maintain a stable net asset value.
- *Municipal securities risk.* Municipal securities may be fully or partially backed or enhanced by the taxing authority of a local government, by the current or anticipated revenues from a specific project or specific assets, or by the credit of, or liquidity enhancement provided by, a private issuer. Special factors, such as legislative changes, and state and local economic and business developments, may adversely affect the yield and/or the fund's ability to maintain a stable net asset value.
- *Structured notes risk.* Structured notes, a type of derivative instrument, can be volatile, and the possibility of default by the financial institution or counterparty may be greater for these instruments than for other types of money market instruments. Structured notes typically are purchased in privately negotiated transactions from financial institutions and, thus, an active trading market for such instruments may not exist.
- *Tax risk.* To be tax-exempt, municipal obligations generally must meet certain regulatory requirements. If any such municipal obligation fails to meet these regulatory requirements, the interest received by the fund from its investment in such obligations and distributed to fund shareholders will be taxable.
- *State-specific risk.* The fund is subject to the risk that California's economy, and the revenues underlying its municipal obligations, may decline. Investing primarily in the municipal obligations of a single state makes the fund more sensitive to risks specific to that state and may entail more risk than investing in the municipal obligations of multiple states as a result of potentially less diversification.
- *Non-diversification risk.* The fund is non-diversified, which means that the fund may invest a relatively high percentage of its assets in a limited number of issuers. Therefore, the fund's performance may be more vulnerable to changes in the market value of a single issuer or group of issuers and more susceptible to risks associated with a single economic, political or regulatory occurrence than a diversified fund.
- *Liquidity fee and/or redemption gate risk.* The fund may impose a fee upon the sale of your shares (a "liquidity fee") or may temporarily suspend your ability to sell shares (a redemption "gate") if the fund's liquidity falls below required minimums because of unusual market conditions, an unusually high volume of redemption requests, redemptions by a few large investors, or other reasons. If a liquidity fee is imposed by the fund, it would reduce the amount you will receive upon the redemption of your shares. A "gate" will suspend your ability to redeem your shares while the gate is imposed and may prevent the fund from being able to pay redemption proceeds within the allowable time period stated in this prospectus.

Performance

The following bar chart and table provide some indication of the risks of investing in the fund. The bar chart shows changes in the performance of the fund's Class A shares from year to year. The table shows the average annual total returns of the fund's Class A shares over time. The fund's past performance is not necessarily an indication of how the fund will perform in the future. More recent performance information may be available at www.dreyfus.com.

Year-by-Year Total Returns as of 12/31 each year (%)

Average Annual Total Returns as of 12/31/17

1 Year	5 Years	10 Years
0.11%	0.08%	0.23%

For the fund's current yield call toll-free 1-800-DREYFUS (inside the U.S. only).

Portfolio Management

The fund's investment adviser is The Dreyfus Corporation.

Purchase and Sale of Fund Shares

Investments in the fund are limited to accounts beneficially owned by natural persons.

In general, the fund's minimum initial investment is \$2,500 and the minimum subsequent investment is \$100. You may sell (redeem) your shares on any business day by calling 1-800-DREYFUS (inside the U.S. only) or by visiting www.dreyfus.com. If you invested in the fund through a third party, such as a bank, broker-dealer or financial adviser, you may mail your request to sell shares to Dreyfus Institutional Department, P.O. Box 9882, Providence, Rhode Island 02940-8082. If you invested directly through the fund, you may mail your request to sell shares to Dreyfus Shareholder Services, P.O. Box 9879, Providence, Rhode Island 02940-8079.

Tax Information

The fund anticipates that dividends paid by the fund generally will be exempt from federal and California state personal income taxes. However, the fund may realize and distribute taxable income and capital gains from time to time as a result of the fund's normal investment activities.

Payments to Broker-Dealers and Other Financial Intermediaries

If you purchase shares through a broker-dealer or other financial intermediary (such as a bank), the fund and its related companies may pay the intermediary for the sale of fund shares and related services. To the extent that the intermediary may receive lesser or no payments in connection with the sale of other investments, the payments from the fund and its related companies may create a potential conflict of interest by influencing the broker-dealer or other intermediary and your financial representative to recommend the fund over the other investments. This potential conflict of interest may be addressed by policies, procedures or practices adopted by the financial intermediary. As there may be many different policies, procedures or practices adopted by different intermediaries to address the manner in which compensation is earned through the sale of investments or the provision of related services, the compensation rates and other payment arrangements that may apply to a financial intermediary and its representatives may vary by intermediary. Ask your financial representative or visit your financial intermediary's website for more information.

Fund Summary

General New York AMT-Free Municipal Money Market Fund Investment Objective

The fund seeks to maximize current income exempt from federal, New York state and New York city income taxes, to the extent consistent with the preservation of capital and the maintenance of liquidity.

Fees and Expenses

This table describes the fees and expenses that you may pay if you buy and hold shares of the fund.

Annual Fund Operating Expenses (expenses that you pay each year as a percentage of the value of your investment)	
Management fees	0.50
Other expenses (including shareholder services fees)	0.24
Total annual fund operating expenses	0.74

Example

The Example is intended to help you compare the cost of investing in the fund with the cost of investing in other mutual funds. The Example assumes that you invest \$10,000 in the fund for the time periods indicated and then hold or redeem all of your shares at the end of those periods. The Example also assumes that your investment has a 5% return each year and that the fund's operating expenses remain the same. Although your actual costs may be higher or lower, based on these assumptions your costs would be:

1 Year	3 Years	5 Years	10 Years
\$76	\$237	\$411	\$918

Principal Investment Strategy

To pursue its goal, the fund normally invests at least 80% of its net assets in short-term, high quality municipal obligations that provide income exempt from federal, New York state and New York city income taxes and the federal alternative minimum tax. The fund also may invest in high quality, short-term structured notes, which are derivative instruments whose value is tied to underlying municipal obligations.

The fund may invest temporarily in high quality, taxable money market instruments, including when the portfolio manager believes acceptable New York municipal obligations are not available for investment. During such periods, the fund may not achieve its investment objective. In addition, a portion of the fund's assets may be invested in short-term, high quality municipal obligations that do not pay income that is exempt from New York state or New York city income taxes.

The fund is a money market fund subject to the maturity, quality, liquidity and diversification requirements of Rule 2a-7 under the Investment Company Act of 1940, as amended, and seeks to maintain a stable share price of \$1.00.

Principal Risks

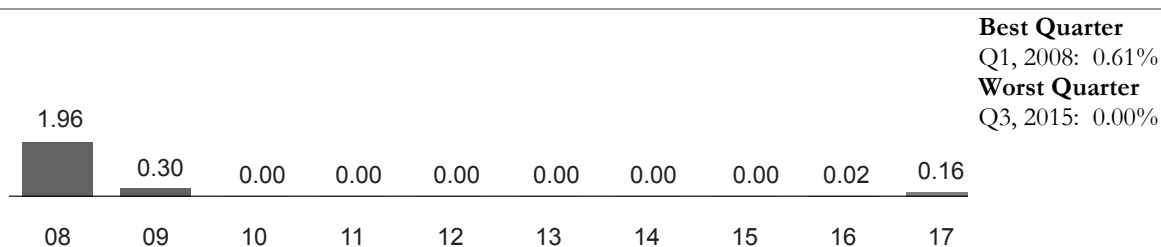
An investment in the fund is not a bank deposit. It is not insured or guaranteed by the Federal Deposit Insurance Corporation (FDIC) or any other government agency. You could lose money by investing in the fund. Although the fund seeks to preserve the value of your investment at \$1.00 per share, it cannot guarantee it will do so. The fund's yield will fluctuate as the short-term securities in its portfolio mature or are sold and the proceeds are reinvested in securities with different interest rates. The fund may impose a fee upon the sale of your shares (a "liquidity fee") or may

temporarily suspend your ability to sell shares (a redemption "gate") if the fund's liquidity falls below required minimums because of market conditions or other factors. Neither The Dreyfus Corporation nor its affiliates have a legal obligation to provide financial support to the fund, and you should not expect that The Dreyfus Corporation or its affiliates will provide financial support to the fund at any time. The following are the principal risks that could reduce the fund's income level and/or share price:

- *Interest rate risk.* This risk refers to the decline in the prices of fixed-income securities that may accompany a rise in the overall level of interest rates. A sharp and unexpected rise in interest rates could impair the fund's ability to maintain a stable net asset value. A low interest rate environment may prevent the fund from providing a positive yield or paying fund expenses out of fund assets and could impair the fund's ability to maintain a stable net asset value.
- *Liquidity risk.* When there is little or no active trading market for specific types of securities, it can become more difficult to sell the securities in a timely manner at or near their perceived value. In such a market, the value of such securities may fall dramatically, potentially impairing the fund's ability to maintain a stable net asset value, even during periods of declining interest rates.
- *Credit risk.* Failure of an issuer of a security to make timely interest or principal payments when due, or a decline or perception of a decline in the credit quality of a security, can cause the security's price to fall. Although the fund invests only in high quality debt securities, the credit quality of the securities held by the fund can change rapidly in certain market environments, and the default or a significant price decline of a single holding could impair the fund's ability to maintain a stable net asset value.
- *Municipal securities risk.* Municipal securities may be fully or partially backed or enhanced by the taxing authority of a local government, by the current or anticipated revenues from a specific project or specific assets, or by the credit of, or liquidity enhancement provided by, a private issuer. Special factors, such as legislative changes, and state and local economic and business developments, may adversely affect the yield and/or the fund's ability to maintain a stable net asset value.
- *Structured notes risk.* Structured notes, a type of derivative instrument, can be volatile, and the possibility of default by the financial institution or counterparty may be greater for these instruments than for other types of money market instruments. Structured notes typically are purchased in privately negotiated transactions from financial institutions and, thus, an active trading market for such instruments may not exist.
- *Tax risk.* To be tax-exempt, municipal obligations generally must meet certain regulatory requirements. If any such municipal obligation fails to meet these regulatory requirements, the interest received by the fund from its investment in such obligations and distributed to fund shareholders will be taxable.
- *State-specific risk.* The fund is subject to the risk that New York's economy, and the revenues underlying its municipal obligations, may decline. Investing primarily in the municipal obligations of a single state makes the fund more sensitive to risks specific to that state and may entail more risk than investing in the municipal obligations of multiple states as a result of potentially less diversification.
- *Non-diversification risk.* The fund is non-diversified, which means that the fund may invest a relatively high percentage of its assets in a limited number of issuers. Therefore, the fund's performance may be more vulnerable to changes in the market value of a single issuer or group of issuers and more susceptible to risks associated with a single economic, political or regulatory occurrence than a diversified fund.
- *Liquidity fee and/or redemption gate risk.* The fund may impose a fee upon the sale of your shares (a "liquidity fee") or may temporarily suspend your ability to sell shares (a redemption "gate") if the fund's liquidity falls below required minimums because of unusual market conditions, an unusually high volume of redemption requests, redemptions by a few large investors, or other reasons. If a liquidity fee is imposed by the fund, it would reduce the amount you will receive upon the redemption of your shares. A "gate" will suspend your ability to redeem your shares while the gate is imposed and may prevent the fund from being able to pay redemption proceeds within the allowable time period stated in this prospectus.

Performance

The following bar chart and table provide some indication of the risks of investing in the fund. The bar chart shows changes in the performance of the fund's Class A shares from year to year. The table shows the average annual total returns of the fund's Class A shares over time. The fund's past performance is not necessarily an indication of how the fund will perform in the future. More recent performance information may be available at www.dreyfus.com.

Year-by-Year Total Returns as of 12/31 each year (%)

Average Annual Total Returns as of 12/31/17

1 Year	5 Years	10 Years
0.16%	0.04%	0.24%

For the fund's current yield call toll-free 1-800-DREYFUS (inside the U.S. only).

Portfolio Management

The fund's investment adviser is The Dreyfus Corporation.

Purchase and Sale of Fund Shares

Investments in the fund are limited to accounts beneficially owned by natural persons.

In general, the fund's minimum initial investment is \$2,500 and the minimum subsequent investment is \$100. You may sell (redeem) your shares on any business day by calling 1-800-DREYFUS (inside the U.S. only) or by visiting www.dreyfus.com. If you invested in the fund through a third party, such as a bank, broker-dealer or financial adviser, you may mail your request to sell shares to Dreyfus Institutional Department, P.O. Box 9882, Providence, Rhode Island 02940-8082. If you invested directly through the fund, you may mail your request to sell shares to Dreyfus Shareholder Services, P.O. Box 9879, Providence, Rhode Island 02940-8079.

Tax Information

The fund anticipates that dividends paid by the fund generally will be exempt from federal, New York state and New York city personal income taxes. However, the fund may realize and distribute taxable income and capital gains from time to time as a result of the fund's normal investment activities.

Payments to Broker-Dealers and Other Financial Intermediaries

If you purchase shares through a broker-dealer or other financial intermediary (such as a bank), the fund and its related companies may pay the intermediary for the sale of fund shares and related services. To the extent that the intermediary may receive lesser or no payments in connection with the sale of other investments, the payments from the fund and its related companies may create a potential conflict of interest by influencing the broker-dealer or other intermediary and your financial representative to recommend the fund over the other investments. This potential conflict of interest may be addressed by policies, procedures or practices adopted by the financial intermediary. As there may be many different policies, procedures or practices adopted by different intermediaries to address the manner in which compensation is earned through the sale of investments or the provision of related services, the compensation rates and other payment arrangements that may apply to a financial intermediary and its representatives may vary by intermediary. Ask your financial representative or visit your financial intermediary's website for more information.

Fund Summary

General New Jersey Municipal Money Market Fund, Inc. Investment Objective

The fund seeks as high a level of current income exempt from federal and New Jersey state income taxes as is consistent with the preservation of capital and the maintenance of liquidity.

Fees and Expenses

This table describes the fees and expenses that you may pay if you buy and hold shares of the fund.

Annual Fund Operating Expenses (expenses that you pay each year as a percentage of the value of your investment)	
Management fees	0.50
Other expenses (including shareholder services fees)	0.27
Total annual fund operating expenses	0.77

Example

The Example is intended to help you compare the cost of investing in the fund with the cost of investing in other mutual funds. The Example assumes that you invest \$10,000 in the fund for the time periods indicated and then hold or redeem all of your shares at the end of those periods. The Example also assumes that your investment has a 5% return each year and that the fund's operating expenses remain the same. Although your actual costs may be higher or lower, based on these assumptions your costs would be:

1 Year	3 Years	5 Years	10 Years
\$79	\$246	\$428	\$954

Principal Investment Strategy

To pursue its goal, the fund normally invests at least 80% of its net assets in short-term, high quality municipal obligations that provide income exempt from federal and New Jersey state income taxes. The fund also may invest in high quality, short-term structured notes, which are derivative instruments whose value is tied to underlying municipal obligations.

Although the fund seeks to provide income exempt from federal and New Jersey state income taxes, income from some of the fund's holdings may be subject to the federal alternative minimum tax. The fund also may invest temporarily in high quality, taxable money market instruments, including when the portfolio manager believes acceptable New Jersey State municipal obligations are not available for investment. During such periods, the fund may not achieve its investment objective. In addition, a portion of the fund's assets may be invested in short-term, high quality municipal obligations that do not pay income that is exempt from New Jersey state income taxes.

The fund is a money market fund subject to the maturity, quality, liquidity and diversification requirements of Rule 2a-7 under the Investment Company Act of 1940, as amended, and seeks to maintain a stable share price of \$1.00.

Principal Risks

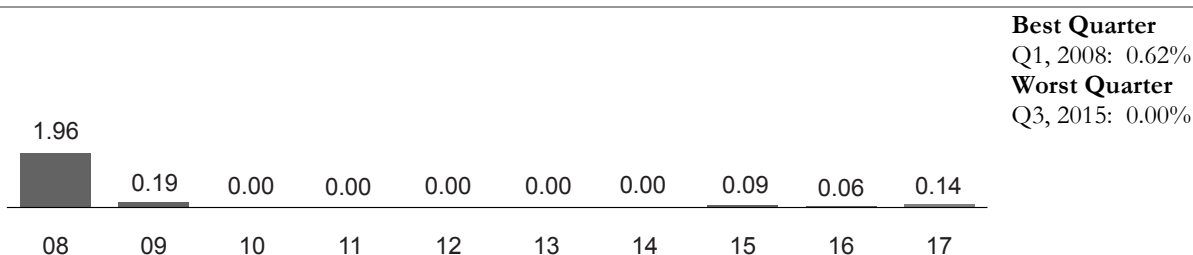
An investment in the fund is not a bank deposit. It is not insured or guaranteed by the Federal Deposit Insurance Corporation (FDIC) or any other government agency. You could lose money by investing in the fund. Although the fund seeks to preserve the value of your investment at \$1.00 per share, it cannot guarantee it will do so. The fund's yield will fluctuate as the short-term securities in its portfolio mature or are sold and the proceeds are reinvested in securities

with different interest rates. The fund may impose a fee upon the sale of your shares (a "liquidity fee") or may temporarily suspend your ability to sell shares (a redemption "gate") if the fund's liquidity falls below required minimums because of market conditions or other factors. Neither The Dreyfus Corporation nor its affiliates have a legal obligation to provide financial support to the fund, and you should not expect that The Dreyfus Corporation or its affiliates will provide financial support to the fund at any time. The following are the principal risks that could reduce the fund's income level and/or share price:

- *Interest rate risk.* This risk refers to the decline in the prices of fixed-income securities that may accompany a rise in the overall level of interest rates. A sharp and unexpected rise in interest rates could impair the fund's ability to maintain a stable net asset value. A low interest rate environment may prevent the fund from providing a positive yield or paying fund expenses out of fund assets and could impair the fund's ability to maintain a stable net asset value.
- *Liquidity risk.* When there is little or no active trading market for specific types of securities, it can become more difficult to sell the securities in a timely manner at or near their perceived value. In such a market, the value of such securities may fall dramatically, potentially impairing the fund's ability to maintain a stable net asset value, even during periods of declining interest rates.
- *Credit risk.* Failure of an issuer of a security to make timely interest or principal payments when due, or a decline or perception of a decline in the credit quality of a security, can cause the security's price to fall. Although the fund invests only in high quality debt securities, the credit quality of the securities held by the fund can change rapidly in certain market environments, and the default or a significant price decline of a single holding could impair the fund's ability to maintain a stable net asset value.
- *Municipal securities risk.* Municipal securities may be fully or partially backed or enhanced by the taxing authority of a local government, by the current or anticipated revenues from a specific project or specific assets, or by the credit of, or liquidity enhancement provided by, a private issuer. Special factors, such as legislative changes, and state and local economic and business developments, may adversely affect the yield and/or the fund's ability to maintain a stable net asset value.
- *Structured notes risk.* Structured notes, a type of derivative instrument, can be volatile, and the possibility of default by the financial institution or counterparty may be greater for these instruments than for other types of money market instruments. Structured notes typically are purchased in privately negotiated transactions from financial institutions and, thus, an active trading market for such instruments may not exist.
- *Tax risk.* To be tax-exempt, municipal obligations generally must meet certain regulatory requirements. If any such municipal obligation fails to meet these regulatory requirements, the interest received by the fund from its investment in such obligations and distributed to fund shareholders will be taxable.
- *State-specific risk.* The fund is subject to the risk that New Jersey's economy, and the revenues underlying its municipal obligations, may decline. Investing primarily in the municipal obligations of a single state makes the fund more sensitive to risks specific to that state and may entail more risk than investing in the municipal obligations of multiple states as a result of potentially less diversification.
- *Non-diversification risk.* The fund is non-diversified, which means that the fund may invest a relatively high percentage of its assets in a limited number of issuers. Therefore, the fund's performance may be more vulnerable to changes in the market value of a single issuer or group of issuers and more susceptible to risks associated with a single economic, political or regulatory occurrence than a diversified fund.
- *Liquidity fee and/or redemption gate risk.* The fund may impose a fee upon the sale of your shares (a "liquidity fee") or may temporarily suspend your ability to sell shares (a redemption "gate") if the fund's liquidity falls below required minimums because of unusual market conditions, an unusually high volume of redemption requests, redemptions by a few large investors, or other reasons. If a liquidity fee is imposed by the fund, it would reduce the amount you will receive upon the redemption of your shares. A "gate" will suspend your ability to redeem your shares while the gate is imposed and may prevent the fund from being able to pay redemption proceeds within the allowable time period stated in this prospectus.

Performance

The following bar chart and table provide some indication of the risks of investing in the fund. The bar chart shows changes in the performance of the fund's Class A shares from year to year. The table shows the average annual total returns of the fund's Class A shares over time. The fund's past performance is not necessarily an indication of how the fund will perform in the future. More recent performance information may be available at www.dreyfus.com.

Year-by-Year Total Returns as of 12/31 each year (%)

Average Annual Total Returns as of 12/31/17

1 Year	5 Years	10 Years
0.14%	0.06%	0.24%

For the fund's current yield, call toll free 1-800-DREYFUS (inside the U.S. only).

Portfolio Management

The fund's investment adviser is The Dreyfus Corporation.

Purchase and Sale of Fund Shares

Investments in the fund are limited to accounts beneficially owned by natural persons.

In general, the fund's minimum initial investment is \$2,500 and the minimum subsequent investment is \$100. You may sell (redeem) your shares on any business day by calling 1-800-DREYFUS (inside the U.S. only) or by visiting www.dreyfus.com. If you invested in the fund through a third party, such as a bank, broker-dealer or financial adviser, you may mail your request to sell shares to Dreyfus Institutional Department, P.O. Box 9882, Providence, Rhode Island 02940-8082. If you invested directly through the fund, you may mail your request to sell shares to Dreyfus Shareholder Services, P.O. Box 9879, Providence, Rhode Island 02940-8079.

Tax Information

The fund anticipates that dividends paid by the fund generally will be exempt from federal and New Jersey state personal income taxes. However, the fund may realize and distribute taxable income and capital gains from time to time as a result of the fund's normal investment activities.

Payments to Broker-Dealers and Other Financial Intermediaries

If you purchase shares through a broker-dealer or other financial intermediary (such as a bank), the fund and its related companies may pay the intermediary for the sale of fund shares and related services. To the extent that the intermediary may receive lesser or no payments in connection with the sale of other investments, the payments from the fund and its related companies may create a potential conflict of interest by influencing the broker-dealer or other intermediary and your financial representative to recommend the fund over the other investments. This potential conflict of interest may be addressed by policies, procedures or practices adopted by the financial intermediary. As there may be many different policies, procedures or practices adopted by different intermediaries to address the manner in which compensation is earned through the sale of investments or the provision of related services, the compensation rates and other payment arrangements that may apply to a financial intermediary and its representatives may vary by intermediary. Ask your financial representative or visit your financial intermediary's website for more information.

Fund Details

Goal and Approach

Each fund is a money market mutual fund with a separate investment portfolio. The operations and results of one fund are unrelated to those of any other fund. This combined prospectus has been prepared for the convenience of investors so that investors can consider a number of investment choices in one document.

Each fund is a money market fund, subject to the maturity, quality, liquidity and diversification requirements of Rule 2a-7 under the Investment Company Act of 1940, as amended, and seeks to maintain a stable share price of \$1.00.

General Government Securities Money Market Fund, General Treasury Securities Money Market Fund and General Treasury and Agency Money Market Fund each has been designated as a "government money market fund" (Government Funds). As Government Funds, each fund is required to invest at least 99.5% of its total assets in securities issued or guaranteed as to principal and interest by the U.S. government or its agencies or instrumentalities, repurchase agreements collateralized solely by cash and/or government securities, and cash.

General Money Market Fund, Inc., General Municipal Money Market Fund, General California Municipal Money Market Fund, General New York AMT-Free Municipal Money Market Fund and General New Jersey Municipal Money Market Fund, Inc. each has been designated as a "retail money market fund" (Retail Funds). As Retail Funds, investments in each fund are limited to accounts beneficially owned by natural persons. Each Retail Fund is limited to investing in high quality securities that The Dreyfus Corporation has determined present minimal credit risks.

Each fund is required to hold at least 30% of its assets in cash, U.S. Treasury securities, certain other government securities with remaining maturities of 60 days or less, or securities that can readily be converted into cash within five business days. Each fund also must maintain an average dollar-weighted portfolio maturity of 60 days or less and a maximum weighted average life to maturity of 120 days. In addition, each of General Money Market Fund, Inc., General Government Securities Money Market Fund, General Treasury Securities Money Market Fund and General Treasury and Agency Money Market Fund is required to hold at least 10% of its assets in cash, U.S. Treasury securities, or securities that can readily be converted into cash within one business day.

In response to liquidity needs or unusual market conditions, each fund may hold all or a significant portion of its total assets in cash for temporary defensive purposes. This may result in a lower current yield and prevent the fund from achieving its investment objective.

General Money Market Fund, Inc.

The fund seeks as high a level of current income as is consistent with the preservation of capital.

To pursue its goal, the fund normally invests in a diversified portfolio of high quality, short-term, dollar-denominated debt securities, including:

- securities issued or guaranteed as to principal and interest by the U.S. government or its agencies or instrumentalities
- certificates of deposit, time deposits, bankers' acceptances and other short-term securities issued by domestic or foreign banks or thrifts or their subsidiaries or branches
- repurchase agreements, including tri-party repurchase agreements
- asset-backed securities
- domestic and dollar-denominated foreign commercial paper, and other short-term corporate obligations, including those with floating or variable rates of interest
- dollar-denominated obligations issued or guaranteed by one or more foreign governments or any of their political subdivisions or agencies

The fund's investments are concentrated in the banking industry, because the fund normally invests at least 25% of its net assets in domestic or dollar-denominated foreign bank obligations.

General Government Securities Money Market Fund

The fund seeks as high a level of current income as is consistent with the preservation of capital and the maintenance of liquidity.

The fund pursues its investment objective by investing only in government securities (i.e., securities issued or guaranteed as to principal and interest by the U.S. government or its agencies or instrumentalities, including those with floating or variable rates of interest), repurchase agreements collateralized solely by government securities and/or cash, and cash.

The fund normally invests at least 80% of its net assets in government securities and repurchase agreements collateralized solely by government securities (i.e., under normal circumstances, the fund will not invest more than 20% of its net assets in cash and/or repurchase agreements collateralized by cash). The securities in which the fund invests include those backed by the full faith and credit of the U.S. government, which include U.S. Treasury securities as well as securities issued by certain agencies of the U.S. government, and those that are neither insured nor guaranteed by the U.S. government. The repurchase agreements that the fund invests in may include tri-party repurchase agreements executed through a third party bank that provides payment administration, collateral custody and management services to the parties to the repurchase agreements.

General Treasury Securities Money Market Fund

The fund seeks as high a level of current income as is consistent with the preservation of capital and maintenance of liquidity.

The fund pursues its investment objective by investing only in U.S. Treasury securities (i.e., securities issued or guaranteed as to principal and interest by the U.S. government, including those with floating or variable rates of interest) and cash.

The fund normally invests at least 80% of its net assets in U.S. Treasury securities (i.e., under normal circumstances, the fund will not invest more than 20% of its net assets in cash), and typically invests exclusively in U.S. Treasury securities.

The fund is managed so that income paid by the fund will be exempt from state and local taxes. Because rules regarding the state and local taxation of dividend income can differ from state to state, investors are urged to consult their tax advisers about the taxation of the fund's dividend income in their state and locality.

General Treasury and Agency Money Market Fund

The fund seeks a high level of current income consistent with stability of principal. This objective may be changed by the fund's board, upon 60 days' prior notice to shareholders.

The fund pursues its investment objective by investing only in U.S. Treasury securities, repurchase agreements collateralized solely by U.S. Treasury securities or securities issued by U.S. government agencies that are backed by the full faith and credit of the U.S. government, and cash.

The fund normally invests at least 80% of its net assets in U.S. Treasury securities and repurchase agreements collateralized solely by U.S. Treasury securities or securities issued by U.S. government agencies that are backed by the full faith and credit of the U.S. government, such as securities issued by the Government National Mortgage Association (i.e., under normal circumstances, the fund will not invest more than 20% of its net assets in cash or repurchase agreements collateralized by cash), and typically invests exclusively in such securities. The repurchase agreements that the fund invests in may include tri-party repurchase agreements executed through a third party bank that provides payment administration, collateral custody and management services to the parties to the repurchase agreements.

General Municipal Money Market Fund

The fund seeks to maximize current income exempt from federal income taxes, to the extent consistent with the preservation of capital and the maintenance of liquidity.

To pursue its goal, the fund normally invests substantially all of its net assets in short-term, high quality municipal obligations that provide income exempt from federal income taxes. The fund also may invest in high quality, short-term structured notes, which are derivative instruments whose value is tied to underlying municipal obligations.

Although the fund seeks to provide income exempt from federal income taxes, income from some of the fund's holdings may be subject to the federal alternative minimum tax. The fund may invest temporarily in high quality, taxable money market instruments, including when the portfolio manager believes acceptable municipal obligations are not available for investment. During such periods, the fund may not achieve its investment objective.

General California Municipal Money Market Fund

The fund seeks to maximize current income exempt from federal and California state income taxes, to the extent consistent with the preservation of capital and the maintenance of liquidity.

To pursue its goal, the fund normally invests at least 80% of its net assets in short-term, high quality municipal obligations that provide income exempt from federal and California state income taxes. The fund also may invest in high quality, short-term structured notes, which are derivative instruments whose value is tied to underlying municipal obligations.

Although the fund seeks to provide income exempt from federal and California state income taxes, income from some of the fund's holdings may be subject to the federal alternative minimum tax. The fund may invest temporarily in high quality, taxable money market instruments, including when the portfolio manager believes acceptable California municipal obligations are not available for investment. During such periods, the fund may not achieve its investment objective. In addition, a portion of the fund's assets may be invested in short-term, high quality municipal obligations that do not pay income that is exempt from California state income taxes.

The fund is non-diversified.

General New York AMT-Free Municipal Money Market Fund

The fund seeks to maximize current income exempt from federal, New York state and New York city income taxes, to the extent consistent with the preservation of capital and the maintenance of liquidity.

To pursue its goal, the fund normally invests at least 80% of its net assets in short-term, high quality municipal obligations that provide income exempt from federal, New York state and New York city income taxes and the federal alternative minimum tax. The fund also may invest in high quality, short-term structured notes, which are derivative instruments whose value is tied to underlying municipal obligations.

The fund may invest temporarily in high quality, taxable money market instruments, including when the portfolio manager believes acceptable New York municipal obligations are not available for investment. During such periods, the fund may not achieve its investment objective. In addition, a portion of the fund's assets may be invested in short-term, high quality municipal obligations that do not pay income that is exempt from New York state or New York city income taxes.

The fund is non-diversified.

General New Jersey Municipal Money Market Fund, Inc.

The fund seeks as high a level of current income exempt from federal and New Jersey state income taxes, consistent with the preservation of capital and the maintenance of liquidity.

To pursue its goal, the fund normally invests at least 80% of its net assets in short-term, high quality municipal obligations that provide income exempt from federal and New Jersey state income taxes. The fund also may invest in high quality, short-term structured notes, which are derivative instruments whose value is tied to underlying municipal obligations.

Although the fund seeks to provide income exempt from federal and New Jersey state income taxes, income from some of the fund's holdings may be subject to the federal alternative minimum tax. The fund also may invest temporarily in high quality, taxable money market instruments, including when the portfolio manager believes acceptable New Jersey State municipal obligations are not available for investment. During such periods, the fund may not achieve its investment objective. In addition, a portion of the fund's assets may be invested in short-term, high quality municipal obligations that do not pay income that is exempt from New Jersey state income taxes.

The fund is non-diversified.

Investment Risks

An investment in a fund is not a bank deposit. It is not insured or guaranteed by the FDIC or any other government agency. You could lose money by investing in the fund. The fund's yield will fluctuate as the short-term securities in its

portfolio mature or are sold and the proceeds are reinvested in securities with different interest rates. Neither The Dreyfus Corporation nor its affiliates have a legal obligation to provide financial support to the fund, and you should not expect that The Dreyfus Corporation or its affiliates will provide financial support to the fund at any time.

Although each fund seeks to preserve the value of your investment at \$1.00 per share, it cannot guarantee it will do so.

Each of the Retail Funds may impose a fee upon the sale of shares (a "liquidity fee") or may temporarily suspend your ability to sell shares (a redemption "gate") if the fund's liquidity falls below required minimums because of market conditions or other factors. The Government Funds currently are not permitted to impose liquidity fees or redemption gates, and the fund's board has no intention to impose a liquidity fee or redemption gate.

The following are the principal risks that could reduce a fund's income level and/or share price:

- *Interest rate risk.* Prices of fixed-income securities tend to move inversely with changes in interest rates. Interest rate risk refers to the decline in the prices of fixed-income securities that may accompany a rise in the overall level of interest rates. Risks associated with rising interest rates are heightened given that interest rates in the United States and other countries currently are at or near historic lows. The Federal Reserve has raised the federal funds rate several times in recent periods and has signaled additional increases in the near future. A sharp and unexpected rise in interest rates could impair the fund's ability to maintain a stable net asset value. A low interest rate environment may prevent the fund from providing a positive yield or paying fund expenses out of fund assets and could impair the fund's ability to maintain a stable net asset value.
- *Liquidity risk.* When there is little or no active trading market for specific types of securities, it can become more difficult to sell the securities in a timely manner at or near their perceived value. In such a market, the value of such securities may fall dramatically, potentially impairing the fund's ability to maintain a stable net asset value, even during periods of declining interest rates. To meet redemption requests, the fund may be forced to sell securities at an unfavorable time and/or under unfavorable conditions, which may impair the fund's ability to maintain a stable net asset value.

Risks Applicable to General Money Market Fund, Inc., General Municipal Money Market Fund, General California Municipal Money Market Fund, General New York AMT-Free Municipal Money Market Fund and General New Jersey Municipal Money Market Fund, Inc.:

- *Credit risk.* Failure of an issuer of a security to make timely interest or principal payments when due, or a decline or perception of a decline in the credit quality of a security, can cause the security's price to fall, lowering the value of the fund's investment in such security. Although the fund invests only in high quality debt securities, any of the fund's holdings could have its credit rating downgraded or could default. The credit quality and prices of the securities held by the fund can change rapidly in certain market environments, and the default or a significant price decline of a single holding could impair the fund's ability to maintain a stable net asset value.

Risks Applicable to General Money Market Fund, Inc. only:

- *Banking industry risk.* The risks generally associated with concentrating investments in the banking industry include interest rate risk, credit risk, and regulatory developments relating to the banking industry such as extensive governmental regulation and/or nationalization that affects the scope of their activities, the prices they can charge and the amount of capital they must maintain; adverse effects on profitability due to increases in interest rates or loan losses; severe price competition; and increased inter-industry consolidation and competition.
- *Foreign investment risk.* The risks generally associated with dollar-denominated foreign investments include economic and political developments, seizure or nationalization of deposits, imposition of taxes or other restrictions on payment of principal and interest. Additional risks associated with investments in foreign issuers include less liquidity, less developed or less efficient trading markets, lack of comprehensive company information, political and economic instability and differing auditing and legal standards. Some sovereign obligors have been among the world's largest debtors to commercial banks, other governments, international financial organizations and other financial institutions. These obligors, in the past, may have experienced substantial difficulties in servicing their external debt obligations, which led to defaults on certain obligations and the restructuring of certain indebtedness.

Risks Applicable to Funds That May Invest in U.S. Treasury Securities and/or U.S. Government Securities:

- *U.S. Treasury securities risk.* A security backed by the U.S. Treasury or the full faith and credit of the United States is guaranteed only as to the timely payment of interest and principal when held to maturity, but the market prices for such securities are not guaranteed and will fluctuate. Because U.S. Treasury securities trade actively outside the United States, their prices may rise and fall as changes in global economic conditions affect the demand for these securities. In addition, such guarantees do not extend to shares of the fund itself.

- *Government securities risk.* Not all obligations of the U.S. government, its agencies and instrumentalities are backed by the full faith and credit of the U.S. Treasury. Some obligations are backed only by the credit of the issuing agency or instrumentality, and in some cases there may be some risk of default by the issuer. Any guarantee by the U.S. government or its agencies or instrumentalities of a security held by the fund does not apply to the market value of such security or to shares of the fund itself. A security backed by the U.S. Treasury or the full faith and credit of the United States is guaranteed only as to the timely payment of interest and principal when held to maturity. In addition, because many types of U.S. government securities trade actively outside the United States, their prices may rise and fall as changes in global economic conditions affect the demand for these securities.

Risks Applicable to Funds That May Enter Into Repurchase Agreements:

- *Repurchase agreement counterparty risk.* The fund is subject to the risk that a counterparty in a repurchase agreement and/or, for a tri-party repurchase agreement, the third party bank providing payment administration, collateral custody and management services for the transaction, could fail to honor the terms of the agreement.

Risks Applicable to Municipal Money Market Funds:

- *Municipal securities risk.* Municipal securities may be fully or partially backed or enhanced by the taxing authority of a local government, by the current or anticipated revenues from a specific project or specific assets, or by the credit of, or liquidity enhancement provided by, a private issuer. Special factors, such as legislative changes, and state and local economic and business developments, may adversely affect the yield and/or value of the fund's investments in municipal securities. Other factors include the general conditions of the municipal securities market, the size of the particular offering, the maturity of the obligation and the rating of the issue. The municipal securities market can be susceptible to increases in volatility and decreases in liquidity. Liquidity can decline unpredictably in response to overall economic conditions or credit tightening. Increases in volatility and decreases in liquidity may be caused by a rise in interest rates (or the expectation of a rise in interest rates), which currently are at or near historic lows in the United States. Changes in economic, business or political conditions relating to a particular municipal project, municipality, or state, territory or possession of the United States in which the fund invests may impair the fund's ability to maintain a stable net asset value. Various types of municipal securities are often related in such a way that political, economic or business developments affecting one obligation could affect other municipal securities held by the fund.
- *Structured notes risk.* Structured notes, a type of derivative instrument, can be volatile, and the possibility of default by the financial institution or counterparty may be greater for these instruments than for other types of money market instruments. Structured notes typically are purchased in privately negotiated transactions from financial institutions and, thus, an active trading market for such instruments may not exist.
- *Tax risk.* To be tax-exempt, municipal obligations generally must meet certain regulatory requirements. If any such municipal obligation fails to meet these regulatory requirements, the interest received by the fund from its investment in such obligations and distributed to fund shareholders will be taxable.

Risks Applicable to General California Municipal Money Market Fund, General New York AMT-Free Municipal Money Market Fund and General New Jersey Municipal Money Market Fund, Inc.:

- *State-specific risk.* The fund is subject to the risk that the state's economy, and the revenues underlying its municipal obligations, may decline. Investing primarily in the municipal obligations of a single state makes the fund more sensitive to risks specific to that state and may entail more risk than investing in the municipal obligations of multiple states as a result of potentially less diversification.
- *Non-diversification risk.* The fund is non-diversified, which means that the fund may invest a relatively high percentage of its assets in a limited number of issuers. Therefore, the fund's performance may be more vulnerable to changes in the market value of a single issuer or group of issuers and more susceptible to risks associated with a single economic, political or regulatory occurrence than a diversified fund.

Risks Applicable to the Retail Funds:

- *Liquidity fee and/or redemption gate risk.* The fund may impose a fee upon the sale of your shares (a "liquidity fee") or may temporarily suspend your ability to sell shares (a redemption "gate") if the fund's liquidity falls below required minimums because of unusual market conditions, an unusually high volume of redemption requests, redemptions by a few large investors, or other reasons. If a liquidity fee is imposed by the fund, it would reduce the amount you will receive upon the redemption of your shares. A "gate" will suspend your ability to redeem your shares while the gate is imposed and may prevent the fund from being able to pay redemption proceeds within the allowable time period stated in this prospectus. If the fund receives a liquidity fee, it is possible that it may return the fee to shareholders in the form of a distribution at a later time. When a fee or a gate is in place, the fund may elect to stop selling shares or to impose additional conditions on the purchase of shares.

Management

The investment adviser for the fund is The Dreyfus Corporation, 200 Park Avenue, New York, New York 10166. Founded in 1947, Dreyfus manages approximately \$258 billion in 150 mutual fund portfolios. For the fiscal year ended November 30, 2017, each of the funds paid Dreyfus a management fee at the effective annual rate set forth in the table below. Each fund paid an effective management fee at a lower rate due to a voluntary undertaking by Dreyfus to waive fees and/or reimburse fund expenses during the period.

Name of Fund	Effective Management Fee (as a percentage of average daily net assets)
General Money Market Fund, Inc.	.48
General Government Securities Money Market Fund	.29
General Treasury Securities Money Market Fund	.25
General Treasury and Agency Money Market Fund	.45
General Municipal Money Market Fund	.38
General California Municipal Money Market Fund	.45
General New York AMT-Free Municipal Money Market Fund	.37
General New Jersey Municipal Money Market Fund, Inc.	.47

A discussion regarding the basis for the board's approving each fund's management agreement with Dreyfus is available in each fund's annual report for the fiscal year ended November 30, 2017 (for General Treasury and Agency Money Market Fund, semiannual report for the six-month period ended May 31, 2017).

Dreyfus is the primary mutual fund business of The Bank of New York Mellon Corporation (BNY Mellon), a global financial services company focused on helping clients manage and service their financial assets, operating in 35 countries and serving more than 100 markets. BNY Mellon is a leading investment management and investment services company, uniquely focused to help clients manage and move their financial assets in the rapidly changing global marketplace. BNY Mellon has \$33.3 trillion in assets under custody and administration and \$1.9 trillion in assets under management. BNY Mellon is the corporate brand of The Bank of New York Mellon Corporation. BNY Mellon Investment Management is one of the world's leading investment management organizations, and one of the top U.S. wealth managers, encompassing BNY Mellon's affiliated investment management firms, wealth management services and global distribution companies. Additional information is available at www.bnymellon.com.

The Dreyfus asset management philosophy is based on the belief that discipline and consistency are important to investment success. For each fund, Dreyfus seeks to establish clear guidelines for portfolio management and to be systematic in making decisions. This approach is designed to provide each fund with a distinct, stable identity.

MBSC Securities Corporation (MBSC), a wholly-owned subsidiary of Dreyfus, serves as distributor of the fund and of the other funds in the Dreyfus Family of Funds. Any Rule 12b-1 fees and shareholder services fees, as applicable, are paid to MBSC for financing the sale and distribution of fund shares and for providing shareholder account service and maintenance, respectively. Dreyfus or MBSC may provide cash payments out of its own resources to financial intermediaries that sell shares of funds in the Dreyfus Family of Funds or provide other services. Such payments are separate from any sales charges, 12b-1 fees and/or shareholder services fees or other expenses that may be paid by a fund to those financial intermediaries. Because those payments are not made by fund shareholders or the fund, the fund's total expense ratio will not be affected by any such payments. These payments may be made to financial intermediaries, including affiliates, that provide shareholder servicing, sub-administration, recordkeeping and/or sub-transfer agency services, marketing support and/or access to sales meetings, sales representatives and management representatives of the financial intermediary. Cash compensation also may be paid from Dreyfus' or MBSC's own resources to financial intermediaries for inclusion of a fund on a sales list, including a preferred or select sales list or in other sales programs. These payments sometimes are referred to as "revenue sharing." From time to time, Dreyfus or MBSC also may provide cash or non-cash compensation to financial intermediaries or their representatives in the form of occasional gifts; occasional meals, tickets or other entertainment; support for due diligence trips; educational conference sponsorships; support for recognition programs; technology or infrastructure support; and other forms of cash or non-cash compensation permissible under broker-dealer regulations. In some cases, these payments or compensation may create an incentive for a financial intermediary or its employees to recommend or sell shares of the fund to you. This potential conflict of interest may be addressed by policies, procedures or practices that are adopted by the financial intermediary. As there may be many different policies, procedures or practices adopted by different intermediaries to address the manner in which compensation is earned through the sale of investments or the provision of related services, the compensation rates and other payment arrangements that may apply to a financial intermediary and its representatives may vary by intermediary. Please contact your financial representative for details about any

payments they or their firm may receive in connection with the sale of fund shares or the provision of services to the fund.

Class A shares of each fund except General Treasury and Agency Money Market Fund are subject to an annual shareholder services fee of up to 0.25% to reimburse the fund's distributor for shareholder account service and maintenance expenses. Class A shares of General Treasury and Agency Money Market Fund are subject to an annual Rule 12b-1 fee of up to .25% (currently limited by the fund's board to .20%) to compensate the fund's distributor for shareholder servicing activities and for activities and expenses primarily intended to result in the sale of Class A shares. Class A shares of General Money Market Fund, General Government Securities Money Market Fund and General Treasury Securities Money Market Fund are subject to an annual Rule 12b-1 fee of 0.20% of the value of the fund's average daily net assets attributable to Class A paid to the fund's distributor for distributing Class A shares, servicing shareholder accounts and advertising and marketing relating to Class A shares of the fund. Because these fees are paid out of the fund's assets on an ongoing basis, over time they will increase the cost of your investment and may cost you more than paying other types of sales charges.

The fund, Dreyfus and MBSC have each adopted a code of ethics that permits its personnel, subject to such code, to invest in securities, including securities that may be purchased or held by the fund. Each code of ethics restricts the personal securities transactions of employees, and requires portfolio managers and other investment personnel to comply with the code's preclearance and disclosure procedures. The primary purpose of the respective codes is to ensure that personal trading by employees does not disadvantage any fund managed by Dreyfus or its affiliates.

Shareholder Guide

Buying and Selling Shares

General Funds are designed primarily for people who are investing through a third party such as a bank, broker-dealer or financial adviser. Third parties with whom you open a fund account may impose policies, limitations and fees which are different than those described herein. Certain funds offer other classes of shares, which are described in separate prospectuses. Third parties purchasing fund shares on behalf of their clients determine which class of shares is suitable for their clients. Consult a representative of your plan or financial institution for further information.

Because the municipal funds seek tax-exempt income, they are not recommended for purchase in IRAs or other qualified retirement plans.

Each fund's portfolio securities are valued at amortized cost, which does not take into account unrealized gains or losses. As a result, portfolio securities are valued at their acquisition cost, adjusted over time based on the discounts or premiums reflected in their purchase price. Each fund uses this valuation method pursuant to Rule 2a-7 under the Investment Company Act of 1940, as amended, in order to be able to maintain a price of \$1.00 per share.

When calculating its NAV, a fund compares the NAV using amortized cost to its NAV using available market quotations or market equivalents, which generally are provided by an independent pricing service approved by the fund's board. The pricing service's procedures are reviewed under the general supervision of the board.

Applicable to the Retail Funds:

Investments in the funds are limited to accounts beneficially owned by natural persons (i.e., human beings).

As "retail" money market funds, each fund has adopted policies and procedures reasonably designed to limit all beneficial owners of the fund to natural persons. Natural persons may invest in a fund directly, jointly with other natural persons or through certain tax-advantaged savings accounts, trusts and other retirement and investment accounts, which may include, among others: participant-directed defined contribution plans; IRAs; custodial accounts; deferred compensation plans for government or tax-exempt organization employees; medical savings accounts; college savings plans; health savings account plans; ordinary trusts and estates of natural persons; or certain other retirement and investment accounts with ultimate investment authority held by the natural person beneficial owner, notwithstanding having an institutional decision maker making day to day decisions (e.g., a plan sponsor in certain retirement arrangements or an investment adviser managing discretionary investment accounts). If a shareholder account is identified as potentially not being beneficially owned by a natural person, and it cannot be established that the shareholder can be re-categorized, the shareholder will be contacted and requested to redeem its fund shares. If the shareholder is not responsive and/or does not redeem the shares as requested (typically within five business days of the request), the shares will be redeemed at the initiation of the fund. Each fund and its agents will not be responsible for any loss in an investor's account or tax liability resulting from an involuntary redemption.

Financial intermediaries are required, to the extent that they hold investments in the fund, to ensure compliance of such investments with the terms and conditions for investor eligibility as set forth above. Such financial intermediaries will be expected to have policies and procedures that are reasonably designed to limit all beneficial owners of the fund on behalf of whom they place purchase orders to natural persons. The fund may involuntarily redeem shares held through intermediaries that do not assist the fund so that the fund may conclude that such shares are beneficially owned by natural persons. Financial intermediaries must promptly report to the fund the identification of any beneficial owner of shares of the fund that is not a natural person of which they are aware and promptly take steps to redeem any such shares of the fund.

How to Buy Shares

Each fund's NAV is calculated at the following time on days the New York Stock Exchange (NYSE), or the transfer agent (as on Good Friday) as to each fund except General Treasury and Agency Money Market Fund and General New Jersey Municipal Money Market Fund, Inc., is open for regular business:

Name of Fund	Fund Calculates NAV at:
General Money Market Fund, Inc.	5:00 p.m.
General Government Securities Money Market Fund	5:00 p.m.
General Treasury Securities Money Market Fund	3:00 p.m.
General Treasury and Agency Money Market Fund	5:00 p.m.
General Municipal Money Market Fund	3:00 p.m.
General California Municipal Money Market Fund	3:00 p.m.
General New York AMT-Free Municipal Money Market Fund	3:00 p.m.
General New Jersey Municipal Money Market Fund, Inc.	3:00 p.m.

All times are Eastern time.

Orders in proper form received and accepted by the fund or a financial intermediary that serves as agent for the fund by the time of day at which a fund calculates its NAV will become effective at the NAV determined on that day and shares purchased will receive the dividend declared on that day. An order to purchase shares received by the fund will be deemed to be "in proper form" if the fund receives "federal funds" or other immediately available funds promptly thereafter. Unless other arrangements have been agreed in advance, the fund generally expects to receive the funds within two hours after the order is received by the fund or a financial intermediary that serves as agent for the fund, or by the close of the Federal Reserve wire transfer system (normally, 6:00 p.m., Eastern time), whichever is earlier. Investors whose orders are received in proper form and accepted after the time of day at which a fund calculates its NAV will be priced, and will begin to accrue dividends, on the following business day.

Orders submitted through a financial intermediary that does not serve as an agent for the fund are priced at the fund's NAV next calculated after the fund receives the order in proper form from the intermediary and accepts it, which may not occur on the day the order is submitted to the intermediary.

If payment is not received within the appropriate time period, the fund reserves the right to cancel the purchase order at its discretion, and the investor would be liable for any resulting losses or expenses incurred by the fund or the fund's transfer agent, including interest charges.

The minimum initial and subsequent investment for regular accounts is \$2,500 and \$100, respectively. The minimum initial investment for Dreyfus-sponsored Retirement Plans or Dreyfus-sponsored IRAs (other than Coverdell Education Savings Accounts) is \$750, with no minimum subsequent investment. The minimum initial investment for Dreyfus-sponsored Coverdell Education Savings Accounts is \$500, with no minimum subsequent investment. Subsequent investments made through Dreyfus TeleTransfer are subject to a \$100 minimum and a \$150,000 maximum. All investments must be in U.S. dollars. Third-party checks, cash, travelers' checks or money orders will not be accepted. You may be charged a fee for any check that does not clear.

By Mail – Regular Accounts. To open a regular account, complete an application and mail it, together with a check payable to The Dreyfus Family of Funds, to the appropriate address below. To purchase additional shares in a regular account, mail a check payable to The Dreyfus Family of Funds (with your account number on your check), together with an investment slip, to the appropriate address below.

By Mail – IRA Accounts. To open an IRA account or make additional investments in an IRA account, be sure to specify the fund name and the year for which the contribution is being made. When opening a new account include a completed IRA application applicable to the type of IRA for which the investment is made, and when making additional investments include an investment slip. Make checks payable to The Dreyfus Family of Funds, and mail to the appropriate address below.

Mailing Address. If you are investing directly through the fund, mail to:

Dreyfus Shareholder Services
P.O. Box 9879
Providence, Rhode Island 02940-8079

If you are investing through a third party, such as a bank, broker-dealer or financial adviser, or in a Retirement Plan, mail to:

Dreyfus Institutional Department
P.O. Box 9882
Providence, Rhode Island 02940-8082

Electronic Check or Wire. To purchase shares in a regular or IRA account by wire or electronic check, please call 1-800-DREYFUS (inside the U.S. only) for more information.

Telephone or Online. To purchase additional shares by telephone or online, you can call 1-800-DREYFUS (inside the U.S. only) or visit www.dreyfus.com to request your transaction. In order to do so, you must have elected the Dreyfus TeleTransfer Privilege on your account application or a Shareholder Services Form. See "Services for Fund Investors — Wire Redemption and Dreyfus TeleTransfer Privileges" for more information. Institutional Direct accounts are not eligible for online services.

Automatically. You may purchase additional shares in a regular or IRA account by selecting one of Dreyfus' automatic investment services made available to the fund on your account application or service application. See "Services for Fund Investors."

How to Sell Shares

You may sell (redeem) shares at any time. Your shares will be sold at the next NAV calculated after your order is received in proper form by the fund or a financial intermediary that serves as agent for the fund. For requests to redeem shares received in proper form by the time of day at which a fund calculates its NAV, shares will be priced at the NAV calculated on that day; for requests to redeem shares received after the time of day at which a fund calculates its NAV, shares will be priced at the NAV calculated on the following day. Any certificates representing fund shares being sold must be returned with your redemption request. Your order will be processed promptly.

If you request the fund to transmit your redemption proceeds to you by check, the fund expects that your redemption proceeds normally will be sent within two business days after your request is received in proper form. If you request the fund to transmit your redemption proceeds to you by wire via the Wire Redemption Privilege (\$1,000 minimum) or electronic check via the Dreyfus TeleTransfer Privilege (\$500 minimum), and the fund has your bank account information on file, the fund expects that your redemption proceeds normally will be wired within one business day or sent by electronic check within two business days, as applicable, to your bank account after your request is received in proper form. See "Services for Fund Investors — Wire Redemption and Dreyfus TeleTransfer Privileges" for more information. Payment of redemption proceeds may take longer than the number of days the fund typically expects and may take up to seven days after your order is received in proper form by the fund's transfer agent or other authorized entity, particularly during periods of stressed market conditions or very large redemptions or excessive trading.

The processing of redemptions may be suspended, and the delivery of redemption proceeds may be delayed beyond seven days, depending on the circumstances, for any period: (i) during which the NYSE is closed (other than on holidays or weekends), or during which trading on the NYSE is restricted; (ii) when an emergency exists that makes the disposal of securities owned by a fund or the determination of the fair value of the fund's net assets not reasonably practicable; or (iii) as permitted by order of the Securities and Exchange Commission for the protection of fund shareholders. For these purposes, the Securities and Exchange Commission determines the conditions under which trading shall be deemed to be restricted and an emergency shall be deemed to exist.

Additionally, the Retail Funds may impose a fee upon the sale of your shares (a "liquidity fee") or may temporarily suspend your ability to sell shares (a redemption "gate") if the fund's liquidity falls below required minimums. See "Potential Restrictions on Fund Redemptions—Fees and Gates" below for more information.

Before selling or writing a check against shares recently purchased by check, Dreyfus TeleTransfer or Automatic Asset Builder, please note that:

- if you send a written request to sell such shares, the fund may delay sending the proceeds for up to eight business days following the purchase of those shares or until the fund receives verification of clearance of the funds used to purchase such shares
- the fund will not honor redemption checks, or process wire, telephone, online or Dreyfus TeleTransfer redemption requests for up to eight business days following the purchase of those shares or until the fund receives verification of clearance of the funds used to purchase such shares

Under normal circumstances, each fund expects to meet redemption requests by using cash it holds in its portfolio or selling portfolio securities to generate cash. In addition, pursuant to an interfund lending order granted by the SEC, the funds, and certain other money market funds in the Dreyfus Family of Funds, may borrow money from certain money market funds in the Dreyfus Family of Funds for temporary or emergency purposes to meet redemption requests. The funds also reserve the right to pay redemption proceeds in securities rather than cash (i.e., "redeem in kind"), if the amount redeemed is large enough to affect fund operations or the redemption request is during stressed market conditions. Any securities distributed in-kind will remain exposed to market risk until sold, and you may incur taxable gain when selling the securities.

By Mail - Regular Accounts. To redeem shares in a regular account by mail, send a letter of instruction that includes your name, your account number, the name of the fund, the dollar amount to be redeemed and how and where to send the proceeds. Mail your request to the appropriate address below.

By Mail - IRA Accounts. To redeem shares in an IRA account by mail, send a letter of instruction that includes all of the same information for regular accounts and indicate whether the distribution is qualified or premature and whether the 10% TEFRA should be withheld. Mail your request to the appropriate address below.

Mailing Address. If you invested directly through the fund, mail to:

Dreyfus Shareholder Services
P.O. Box 9879
Providence, Rhode Island 02940-8079

If you invested through a third party, such as a bank, broker-dealer or financial adviser, or in a Retirement Plan, mail to:

Dreyfus Institutional Department
P.O. Box 9882
Providence, Rhode Island 02940-8082

A medallion signature guarantee is required for some written sell orders. These include:

- amounts of \$10,000 or more on accounts whose address has been changed within the last 30 days
- requests to send the proceeds to a different payee or address
- amounts of \$100,000 or more

A medallion signature guarantee helps protect against fraud. You can obtain one from most banks or securities dealers, but not from a notary public. For joint accounts, each signature must be guaranteed. Please call to ensure that your medallion signature guarantee will be processed correctly.

Telephone or Online. To redeem shares by telephone or online, call 1-800-DREYFUS (inside the U.S. only) or, for regular accounts, visit www.dreyfus.com to request your transaction.

By calling 1-800-DREYFUS (inside the U.S. only) you may speak to a Dreyfus representative and request that redemption proceeds be paid by check and mailed to your address of record (maximum \$250,000 per day). For redemption requests made online through www.dreyfus.com or through Dreyfus Express® automated account access system, there is a \$100,000 per day limit.

Automatically. You may sell shares in a regular account by completing a Dreyfus Automatic Withdrawal Form which you can obtain by calling 1-800-DREYFUS (inside the U.S. only), visiting www.dreyfus.com or contacting your financial representative. For instructions on how to establish automatic withdrawals to sell shares in an IRA account, please call 1-800-DREYFUS (inside the U.S. only) or contact your financial representative. See "Services for Fund Investors – Automatic Services."

Potential Restrictions on Fund Redemptions—Fees and Gates

Applicable to each Retail Fund:

If the fund's weekly liquid assets fall below 30% of its total assets, the fund's board, if it determines it is in the best interests of the fund, may impose liquidity fees of up to 2% of the value of the shares redeemed and/or redemption gates beginning as early as the same day. In addition, if the fund's weekly liquid assets fall below 10% of its total assets at the end of any business day, the fund must impose a 1% liquidity fee on shareholder redemptions, beginning on the next business day, unless the fund's board, including a majority of the board members who are not "interested persons" of the fund, determines that a lower or higher fee (not to exceed 2%), or no fee, is in the best interests of the fund. "Weekly liquid assets" include cash, government securities and securities readily convertible into cash within five business days. It is anticipated that the need to impose liquidity fees and redemption gates would occur very rarely, if at all, during times of extraordinary market stress.

Shareholders and financial intermediaries generally will be notified before a liquidity fee is imposed on the fund (although the fund's board, in its discretion, may elect otherwise). A liquidity fee would be imposed on all redemption requests (including redemptions by exchange into another fund) processed at the first NAV calculation following the announcement that the fund would impose a liquidity fee, which may be the same day. Liquidity fees generally would operate to reduce the amount an investor receives upon redemption of fund shares, including upon an exchange of fund shares for shares of another fund, although under certain arrangements through which an intermediary remits the liquidity fee to the fund and charges an investor directly the fund will pay gross redemption proceeds to the intermediary. Liquidity fee proceeds would generally be retained by the fund and may be used to assist the fund to

restore its \$1.00 share price. If the fund receives a liquidity fee, it is possible that it may return the fee to shareholders in the form of a distribution at a later time.

Shareholders and financial intermediaries will not be notified prior to the imposition of a redemption gate; however, financial intermediaries may be notified after the last NAV is calculated on the day the fund's board has made a decision to impose a redemption gate. Redemption requests (including redemptions by exchange into another fund) submitted while a redemption gate is imposed will be cancelled without further notice. If shareholders still wish to redeem their shares after a redemption gate has been lifted, they will need to submit a new redemption request at that time.

When a liquidity fee or a redemption gate is in place, the fund may elect to stop selling shares or to impose additional conditions on the purchase of shares.

The fund's board may, in its discretion, terminate a liquidity fee or redemption gate at any time if it believes such action to be in the best interest of the fund. In addition, a liquidity fee or redemption gate will automatically terminate at the beginning of the next business day once the fund's weekly liquid assets reach at least 30% of its total assets. Redemption gates may only last up to 10 business days in any 90-day period.

The imposition and termination of a liquidity fee or redemption gate would be announced on the fund's website (www.dreyfus.com). In addition, the fund will communicate such action through a disclosure supplement to this prospectus and may further communicate such action by other means.

The fund's board also may determine to permanently suspend redemptions and liquidate the fund if the fund, at the end of a business day, has less than 10% of its total assets invested in weekly liquid assets and the fund's board determines that it would not be in the best interests of the fund to continue operating. In the event that the board approves liquidation of the fund, Dreyfus will commence the orderly liquidation of the fund's portfolio securities, following which the fund's net assets will be distributed to shareholders pursuant to a plan of liquidation adopted by the board.

General Policies

Each fund and the funds' transfer agent are authorized to act on telephone or online instructions from any person representing himself or herself to be you and reasonably believed by the fund or the transfer agent to be genuine. You may be responsible for any fraudulent telephone or online order as long as the fund or the funds' transfer agent (as applicable) takes reasonable measures to confirm that the instructions are genuine.

All shareholder services and privileges offered to shareholders may be modified or terminated at any time, except as otherwise stated in a fund's Statement of Additional Information ("SAI"). Please see a fund's SAI for additional information on buying and selling shares, privileges and other shareholder services.

If you invest through a financial intermediary (rather than directly through the fund), the policies may be different than those described herein. For example, banks, brokers, Retirement Plans, financial advisers and financial supermarkets may charge transaction fees and may set different minimum investments or limitations on buying or selling shares. Please consult your financial representative.

Money market funds generally are used by investors for short-term investments, often in place of bank checking or savings accounts, or for cash management purposes. Investors value the ability to add and withdraw their funds quickly, without restriction. For this reason, although Dreyfus discourages excessive trading and other abusive trading practices, the funds have not adopted policies and procedures, or imposed redemption fees or other restrictions such as minimum holding periods, to deter frequent purchases and redemptions of fund shares. Dreyfus also believes that money market funds, such as the funds, are not typically targets of abusive trading practices. However, frequent purchases and redemptions of a fund's shares could increase the fund's transaction costs, such as market spreads and custodial fees, and may interfere with the efficient management of a fund's portfolio, which could detract from the fund's performance. Each fund reserves the right to reject any purchase or exchange request in whole or in part. Funds in the Dreyfus Family of Funds that are not money market mutual funds have approved policies and procedures that are intended to discourage and prevent abusive trading practices in those mutual funds, which may apply to exchanges from or into a fund. If you plan to exchange your fund shares for shares of another Dreyfus fund, please read the prospectus of that other Dreyfus fund for more information.

Each fund also reserves the right to:

- change or discontinue fund exchanges, or temporarily suspend exchanges during unusual market conditions
- change its minimum investment amount

Each fund also may process purchase and sale orders and calculate its NAV on days that the fund's primary trading markets are open and the fund's management determines to do so.

Small Account Policies

To offset the relatively higher costs of servicing smaller accounts, General California Municipal Money Market Fund, General New York AMT-Free Municipal Money Market Fund and General New Jersey Municipal Money Market Fund, Inc. may charge regular accounts with balances below \$2,000 an annual fee of \$12. The fee generally will be imposed during the fourth quarter of each calendar year. No small account fee will be charged: any investor whose aggregate Dreyfus mutual fund investments total at least \$25,000; accounts participating in automatic investment programs; and accounts opened through a financial institution.

With respect to any fund, if your account falls below \$500, the fund may ask you to increase your balance. If it is still below \$500 after 45 days, the fund may close your account and send you the proceeds.

Escheatment

If your account is deemed "abandoned" or "unclaimed" under state law, the fund may be required to "escheat" or transfer the assets in your account to the applicable state's unclaimed property administration. The state may sell escheated shares and, if you subsequently seek to reclaim your proceeds of liquidation from the state, you may only be able to recover the amount received when the shares were sold. It is your responsibility to ensure that you maintain a correct address for your account, keep your account active by contacting the fund's transfer agent or distributor by mail or telephone or accessing your account through the fund's website at least once a year, and promptly cash all checks for dividends, capital gains and redemptions. The fund, the fund's transfer agent and Dreyfus and its affiliates will not be liable to shareholders or their representatives for good faith compliance with state escheatment laws.

Distributions and Taxes

Each fund earns dividends, interest and other income from its investments, and distributes this income (less expenses) to shareholders as dividends. Each fund also realizes capital gains from its investments, and distributes these gains (less any losses) to shareholders as capital gain distributions. Each fund normally pays dividends monthly and capital gain distributions, if any, annually. Fund dividends and capital gain distributions will be reinvested in the fund unless you instruct the fund otherwise. There are no fees or sales charges on reinvestments.

The taxable money market funds' distributions are taxable as ordinary income or capital gains (unless you are investing through an IRA, Retirement Plan or other U.S. tax-advantaged investment plan, in which case taxes may be deferred).

Each municipal money market fund anticipates that dividends paid by the fund generally will be exempt from federal income taxes. However, the fund may realize and distribute taxable income and capital gains from time to time as a result of the fund's normal investment activities. With respect to General California Municipal Money Market Fund, General New York AMT-Free Municipal Money Market Fund and General New Jersey Municipal Money Market Fund, Inc. for California state, New York state and city, and New Jersey state income tax purposes, respectively, distributions derived from interest on municipal securities of California, New York or New Jersey issuers, respectively, and from interest on qualifying securities issued by U.S. territories and possessions are generally exempt from tax. Distributions that are federally taxable as ordinary income or capital gains are generally subject to the respective state's personal income taxes.

The tax status of any distribution generally is the same regardless of how long you have been in the fund and whether you reinvest your distributions or take them in cash.

The tax status of your distributions will be detailed in your annual tax statement from the fund. Because everyone's tax situation is unique, please consult your tax adviser before investing.

Applicable to each Retail Fund:

Because liquidity fees may be imposed on redemptions, including taxable exchanges into other funds, you may realize a gain or loss for tax purposes upon the redemption or exchange of fund shares. Generally, a shareholder of a money market fund, rather than realizing gain or loss upon each redemption or exchange of fund shares, may use a simplified method of accounting to annually recognize gain or loss (generally treated as short-term capital gain or loss) with respect to its shares in the fund, based on the changes in the aggregate value of the shareholder's shares in the fund during the computation period or periods (selected by the shareholder) comprising the shareholder's taxable year. Under prescribed rules, the change in value in the shareholder's fund shares for each computation period is adjusted

appropriately to reflect any acquisitions and redemptions of fund shares by the shareholder during that computation period.

If a liquidity fee is imposed by a fund, it generally would reduce the amount you will receive upon the redemption of your shares, and would generally decrease the amount of any capital gain or increase the amount of any capital loss you will recognize with respect to such redemption. There is some degree of uncertainty with respect to the tax treatment of liquidity fees received by a fund, and such tax treatment may be the subject of future guidance issued by the Internal Revenue Service. If a fund receives liquidity fees, it will consider the appropriate tax treatment of such fees to the fund at such time.

Services for Fund Investors

The following services may be available to fund investors. If you purchase shares through a third party financial intermediary or in a Retirement Plan, the financial intermediary or Retirement Plan recordkeeper may impose different restrictions on these services and privileges, or may not make them available at all. Consult a representative of your financial intermediary or Retirement Plan for further information.

Automatic Services

Buying or selling shares automatically is easy with the services described below. With each service, you select a schedule and amount, subject to certain restrictions. For information, call 1-800-DREYFUS (inside the U.S. only) or your financial representative.

Dreyfus Automatic Asset Builder® permits you to purchase fund shares (minimum of \$100 and maximum of \$150,000 per transaction) at regular intervals selected by you. Fund shares are purchased by transferring funds from the bank account designated by you.

Dreyfus Payroll Savings Plan permits you to purchase fund shares (minimum of \$100 per transaction) automatically through a payroll deduction.

Dreyfus Government Direct Deposit permits you to purchase fund shares (minimum of \$100 and maximum of \$50,000 per transaction) automatically from your federal employment, Social Security or other regular federal government check.

Dreyfus Dividend Sweep permits you to automatically reinvest dividends and distributions from the fund in shares of the same class, or another class in which you are eligible to invest, of another fund in the Dreyfus Family of Funds. Shares held through a Dreyfus-sponsored Coverdell Education Savings Account are not eligible for this privilege.

Dreyfus Auto-Exchange Privilege permits you to exchange at regular intervals your fund shares for shares of the same class, or another class in which you are eligible to invest, of another fund in the Dreyfus Family of Funds.

Dreyfus Automatic Withdrawal Plan permits you to make withdrawals (minimum of \$50) on a specific day each month, quarter or semiannual or annual period, provided your account balance is at least \$5,000.

Fund Exchanges

Generally, you can exchange shares worth \$500 or more (no minimum for Dreyfus-sponsored Retirement Plans and Dreyfus-sponsored IRAs) into shares of the same class, or another class in which you are eligible to invest, of another fund in the Dreyfus Family of Funds. You can request your exchange by calling 1-800-DREYFUS (inside the U.S. only) or your financial representative. Be sure to read the current prospectus for any fund into which you are exchanging before investing. Any new account established through an exchange generally will have the same privileges as your original account (as long as they are available). There is currently no fee for exchanges, although you may be charged a sales load when exchanging into any fund that has one.

Your exchange request will be processed on the same business day it is received in proper form, provided that each fund is open at the time of the request (i.e., the request is received by the latest time each fund calculates its NAV for that business day). If the exchange is accepted at a time of day after one or both of the funds is closed (i.e., at a time after the NAV for the fund has been calculated for that business day), the exchange will be processed on the next business day. See the SAI for more information regarding exchanges.

Wire Redemption and Dreyfus TeleTransfer Privileges

To redeem shares from your Dreyfus fund account with a phone call (for regular or IRA accounts) or online (for regular accounts only), use the Wire Redemption Privilege or the Dreyfus TeleTransfer Privilege. To purchase additional shares of your Dreyfus Fund account with a phone call (for regular or IRA accounts) or online (for regular accounts only), use

the Dreyfus TeleTransfer Privilege. You can set up the Wire Redemption Privilege and Dreyfus TeleTransfer Privilege on your account by providing bank account information and following the instructions on your application or, if your account has already been established, a Shareholder Services Form which you can obtain by calling 1-800-DREYFUS (inside the U.S. only), visiting www.dreyfus.com or by contacting your financial representative. Shares held in a Coverdell Education Savings Account may not be redeemed through the Wire Redemption or Dreyfus TeleTransfer Privileges.

Account Statements

Every Dreyfus fund investor automatically receives regular account statements. You will also be sent a yearly statement detailing the tax characteristics of any dividends and distributions you have received.

Checkwriting Privilege

You may write redemption checks against your account in amounts of \$500 or more. These checks are free; however, a fee will be charged if you request a stop payment or if the transfer agent cannot honor a redemption check due to insufficient funds or another valid reason. Please do not postdate your checks or use them to close your account.

Dreyfus Express® Voice-Activated Account Access

You can check your Dreyfus account balances, get fund price and performance information, order documents and much more, by calling 1-800-DREYFUS (inside the U.S. only) and using the Dreyfus Express® Voice-Activated System. You may also be able to purchase fund shares and/or transfer money between your Dreyfus Funds using Dreyfus Express®. Certain requests require the services of a representative.

Dreyfus Advisor Services

For investors with a minimum of \$100,000 or more in investable assets, Dreyfus Advisor Services is a personalized asset management service. We welcome the opportunity to discuss what we can do, specifically for you. For more information, contact an advisor at 1-800-896-2645.

Retirement Plans and IRAs

Dreyfus offers a variety of Retirement Plans and IRAs (including traditional and Roth IRAs and Coverdell Education Savings Accounts). Here's where you call for information:

- For traditional, rollover and Roth IRAs and Coverdell Education Savings Accounts, call 1-800-DREYFUS (inside the U.S. only)
- For SEP-IRAs, SARSEPs, SIMPLE IRAs and Retirement Plan accounts, call 1-800-358-0910

Financial Highlights

These financial highlights describe the performance of the fund's Class A shares for the fiscal periods indicated. "Total return" shows how much your investment in the fund would have increased (or decreased) during each period, assuming you had reinvested all dividends and distributions. These financial highlights have been derived from the fund's financial statements, which have been audited by Ernst & Young LLP (each fund except General Treasury and Agency Money Market Fund) or KPMG LLP (General Treasury and Agency Money Market Fund), each, an independent registered public accounting firm, whose report, along with the fund's financial statements, is included in the annual report, which is available upon request.

	<i>Year Ended November 30,</i>				
General Money Market Fund	2017	2016	2015	2014	2013
Per Share Data (\$):					
Net asset value, beginning of period	1.00	1.00	1.00	1.00	1.00
Investment Operations:					
Investment income--net	.004	.000 ^a	.000 ^a	.000 ^a	.000 ^a
Distributions:					
Dividends from investment income--net	(.004)	(.000) ^a	(.000) ^a	(.000) ^a	(.000) ^a
Net asset value, end of period	1.00	1.00	1.00	1.00	1.00
Total Return (%)	.39	.01	.01	.01	.01
Ratios/Supplemental Data (%):					
Ratio of total expenses to average net assets	.79	.74	.74	.73	.73
Ratio of net expenses to average net assets	.78	.54	.22	.17	.19
Ratio of net investment income to average net assets	.39	.01	.01	.01	.01
Net Assets, end of period (\$ x 1,000)	1,238,371	1,141,649	2,122,633	1,921,780	1,808,922

^a Amount represents less than \$.001 per share.

	<i>Year Ended November 30,</i>				
General Government Securities Money Market Fund	2017	2016	2015	2014	2013
Per Share Data (\$):					
Net asset value, beginning of period	1.00	1.00	1.00	1.00	1.00
Investment Operations:					
Investment income--net	.001	.000 ^a	.000 ^a	.000 ^a	.000 ^a
Distributions:					
Dividends from investment income--net	(.001)	(.000) ^a	(.000) ^a	(.000) ^a	(.000) ^a
Net asset value, end of period	1.00	1.00	1.00	1.00	1.00
Total Return (%)	.13	.01	.00^b	.00^b	.00^b
Ratios/Supplemental Data (%):					
Ratio of total expenses to average net assets	.84	.75	.82	.82	.80
Ratio of net expenses to average net assets	.64	.40	.12	.07	.13
Ratio of net investment income to average net assets	.03	.01	.00 ^b	.00 ^b	.00 ^b
Net Assets, end of period (\$ x 1,000)	8,092	107,596	41,256	36,702	43,994

^a Amount represents less than \$.001 per share.

^b Amount represents less than .01%.

Financial Highlights (cont'd)

	<i>Year Ended November 30,</i>				
General Treasury Securities Money Market Fund	2017	2016	2015	2014	2013
Per Share Data (\$):					
Net asset value, beginning of period	1.00	1.00	1.00	1.00	1.00
Investment Operations:					
Investment income--net	.001	.000 ^a	.000 ^a	.000 ^a	.000 ^a
Distributions:					
Dividends from investment income--net	(.001)	(.000) ^a	(.000) ^a	(.000) ^a	(.000) ^a
Net asset value, end of period	1.00	1.00	1.00	1.00	1.00
Total Return (%)	.13	.01	.00 ^b	.00 ^b	.00 ^b
Ratios/Supplemental Data (%):					
Ratio of total expenses to average net assets	.84	.74	.76	.74	.73
Ratio of net expenses to average net assets	.75	.26	.04	.04	.08
Ratio of net investment income to average net assets	.13	.01	.00 ^b	.00 ^b	.00 ^b
Net Assets, end of period (\$ x 1,000)	9,783	8,810	18,730	24,175	28,632

^a Amount represents less than \$.001 per share.

^b Amount represents less than .01%.

	Year Ended		One Month	Year Ended October 31,		
General Treasury and Agency Money Market Fund	November 30,	November 30,	Ended	2015	2014	2013
	2017	2016	November 30,			
Per Share Data (\$):						
Net asset value, beginning of period	1.00	1.00	2015 ^a	1.00	1.00	1.00
Investment Operations:						
Investment income--net	.002	.000 ^b	.000 ^b	.000 ^b	.000 ^b	.000 ^b
Distributions:						
Dividends from investment income--net	(.002)	(.000) ^b	(.000) ^b	(.000) ^b	(.000) ^b	(.000) ^b
Net asset value, end of period	1.00	1.00	1.00	1.00	1.00	1.00
Total Return (%)	.23	.01	.00 ^{c,d}	.00 ^d	.00 ^d	.00 ^d
Ratios/Supplemental Data (%):						
Ratio of total expenses to average net assets	.71	.72	.74 ^e	.71	.71	.71
Ratio of net expenses to average net assets	.64	.34	.09 ^e	.08	.05	.09
Ratio of net investment income to average net assets	.21	.01	.00 ^{d,e}	.00 ^d	.00 ^d	.00 ^d
Net Assets, end of period (\$ x 1,000)	188,047	246,191	162,028	170,252	122,537	155,847

^a The fund has changed its fiscal year end from October 31 to November 30.

^b Amount represents less than \$.001 per share.

^c Not annualized.

^d Amount represents less than .01%.

^e Annualized.

Financial Highlights (cont'd)

	<i>Year Ended November 30,</i>				
General Municipal Money Market Fund	2017	2016	2015	2014	2013
Per Share Data (\$):					
Net asset value, beginning of period	1.00	1.00	1.00	1.00	1.00
Investment Operations:					
Investment income--net	.003	.000 ^a	.000 ^a	.000 ^a	.000 ^a
Distributions:					
Dividends from investment income--net	(.003)	(.000) ^a	(.000) ^a	(.000) ^a	(.000) ^a
Net asset value, end of period	1.00	1.00	1.00	1.00	1.00
Total Return (%)	.25	.04	.00 ^b	.00 ^b	.00 ^b
Ratios/Supplemental Data (%):					
Ratio of total expenses to average net assets	.64	.59	.58	.60	.61
Ratio of net expenses to average net assets	.63	.36	.10	.11	.16
Ratio of net investment income to average net assets	.23	.03	.00 ^b	.00 ^b	.00 ^b
Net Assets, end of period (\$ x 1,000)	309,031	378,409	520,547	49,670	49,548

^a Amount represents less than \$.001 per share.

^b Amount represents less than .01%.

	<i>Year Ended November 30,</i>				
General California Municipal Money Market Fund	2017	2016	2015	2014	2013
Per Share Data (\$):					
Net asset value, beginning of period	1.00	1.00	1.00	1.00	1.00
Investment Operations:					
Investment income--net	.001	.003	.000 ^a	.000 ^a	.000 ^a
Distributions:					
Dividends from investment income—net	(.001)	(.000) ^a	(.000) ^a	(.000) ^a	(.000) ^a
Tax return of capital	-	(.003)	-	-	-
Total Distributions	(.001)	(.003)	(.000) ^a	(.000) ^a	(.000) ^a
Net asset value, end of period	1.00	1.00	1.00	1.00	1.00
Total Return (%)	.07	.28	.00 ^b	.00 ^b	.00 ^b
Ratios/Supplemental Data (%):					
Ratio of total expenses to average net assets	.84	.73	.68	.66	.66
Ratio of net expenses to average net assets	.80	.34	.09	.11	.18
Ratio of net investment income to average net assets	.07	.01	.00 ^b	.00 ^b	.00 ^b
Net Assets, end of period (\$ x 1,000)	64,031	68,508	129,108	123,763	137,765

^a Amount represents less than \$.001 per share.

^b Amount represents less than .01%.

Financial Highlights (cont'd)

	<i>Year Ended November 30,</i>				
General New York AMT-Free Municipal Money Market Fund	2017	2016	2015	2014	2013
Per Share Data (\$):					
Net asset value, beginning of period	1.00	1.00	1.00	1.00	1.00
Investment Operations:					
Investment income--net	.001	.000 ^a	.000 ^a	.000 ^a	.000 ^a
Distributions:					
Dividends from investment income--net	(.001)	(.000) ^a	(.000) ^a	(.000) ^a	(.000) ^a
Net asset value, end of period	1.00	1.00	1.00	1.00	1.00
Total Return (%)	.12	.02	.00^b	.00^b	.00^b
Ratios/Supplemental Data (%):					
Ratio of total expenses to average net assets	.74	.70	.71	.70	.71
Ratio of net expenses to average net assets	.72	.38	.13	.17	.22
Ratio of net investment income to average net assets	.11	.01	.00 ^b	.00 ^b	.00 ^b
Net Assets, end of period (\$ x 1,000)	97,845	112,952	148,549	81,779	100,790

^a Amount represents less than \$.001 per share.

^b Amount represents less than .01%.

	<i>Year Ended November 30,</i>				
General New Jersey Municipal Money Market Fund, Inc.	2017	2016	2015	2014	2013
Per Share Data (\$):					
Net asset value, beginning of period	1.00	1.00	1.00	1.00	1.00
Investment Operations:					
Investment income--net	.001	.001	.000 ^a	.000 ^a	.000 ^a
Distributions:					
Dividends from investment income--net	(.001)	(.001)	(.000) ^a	(.000) ^a	(.000) ^a
Net asset value, end of period	1.00	1.00	1.00	1.00	1.00
Total Return (%)	.14	.10	.00^b	.00^b	.00^b
Ratios/Supplemental Data (%):					
Ratio of total expenses to average net assets	.77	.70	.64	.64	.64
Ratio of net expenses to average net assets	.74	.37	.19	.22	.31
Ratio of net investment income to average net assets	.09	.01	.00 ^b	.00 ^b	.00 ^b
Net Assets, end of period (\$ x 1,000)	109,396	105,553	249,852	268,175	242,490

^a Amount represents less than \$.001 per share.

^b Amount represents less than .01%.

NOTES

NOTES

For More Information

More information on each fund is available free upon request, including the following:

Annual/Semiannual Report

The funds' annual and semiannual reports describe the funds' performance, list portfolio holdings and contain a letter from the funds' manager discussing recent market conditions, economic trends and fund strategies that significantly affected the funds' performance during the period covered by the report. Each fund's most recent annual and semiannual reports are available at www.dreyfus.com.

Statement of Additional Information (SAI)

The SAI provides more details about a fund and its policies. A current SAI is available at www.dreyfus.com and is on file with the Securities and Exchange Commission (SEC). The SAI is incorporated by reference (and is legally considered part of this prospectus).

Portfolio Holdings

Dreyfus funds generally disclose, at www.dreyfus.com under Products, (1) complete portfolio holdings as of each month-end with a one month lag and as of each calendar quarter end with a 15-day lag; (2) top 10 holdings as of each month-end with a 10-day lag; and (3) from time to time, certain security-specific performance attribution data as of a month end, with a 10-day lag. From time to time a fund may make available certain portfolio characteristics, such as allocations, performance- and risk-related statistics, portfolio-level statistics and non-security specific attribution analyses, on request. Dreyfus money market funds generally disclose, also at www.dreyfus.com under Products, their complete schedule of holdings daily. A fund's portfolio holdings and any security-specific performance attribution data will remain on the website at least until the fund files its Form N-Q or Form N-CSR for the period that includes the dates of the posted holdings.

A complete description of the funds' policies and procedures with respect to the disclosure of a fund's portfolio securities is available in the fund's SAI and at www.dreyfus.com.

To Obtain Information

By telephone. Call 1-800-DREYFUS (inside the U.S. only)

By mail.

The Dreyfus Family of Funds
144 Glenn Curtiss Boulevard
Uniondale, NY 11556-0144

By E-mail. Send your request to info@dreyfus.com

On the Internet. Certain fund documents can be viewed online or downloaded from:

SEC: <http://www.sec.gov>

Dreyfus: <http://www.dreyfus.com>

You can also obtain copies, after paying a duplicating fee, by visiting the SEC's Public Reference Room in Washington, DC (for information, call 1-202-551-8090) or by E-mail request to publicinfo@sec.gov, or by writing to the SEC's Public Reference Section, Washington, DC 20549-1520.

This prospectus does not constitute an offer or solicitation in any state or jurisdiction in which, or to any person to whom, such offering or solicitation may not lawfully be made.

General Money Market Fund, Inc.
SEC file number: 811-03207

General Government Securities Money Market Fund
General Treasury Securities Money Market Fund
each a series of General Government Securities Money Market Funds, Inc.
SEC file number: 811-03456

General Treasury and Agency Money Market Fund
a series of The Dreyfus/Laurel Funds, Inc.
SEC file number: 811-05202

General Municipal Money Market Fund
a series of General Municipal Money Market Funds, Inc.
SEC file number: 811-03481

General California Municipal Money Market Fund
SEC file number: 811-04871

General New York AMT-Free Municipal Money Market Fund
SEC file number: 811-04870

General New Jersey Municipal Money Market Fund, Inc.
SEC file number: 811-05527